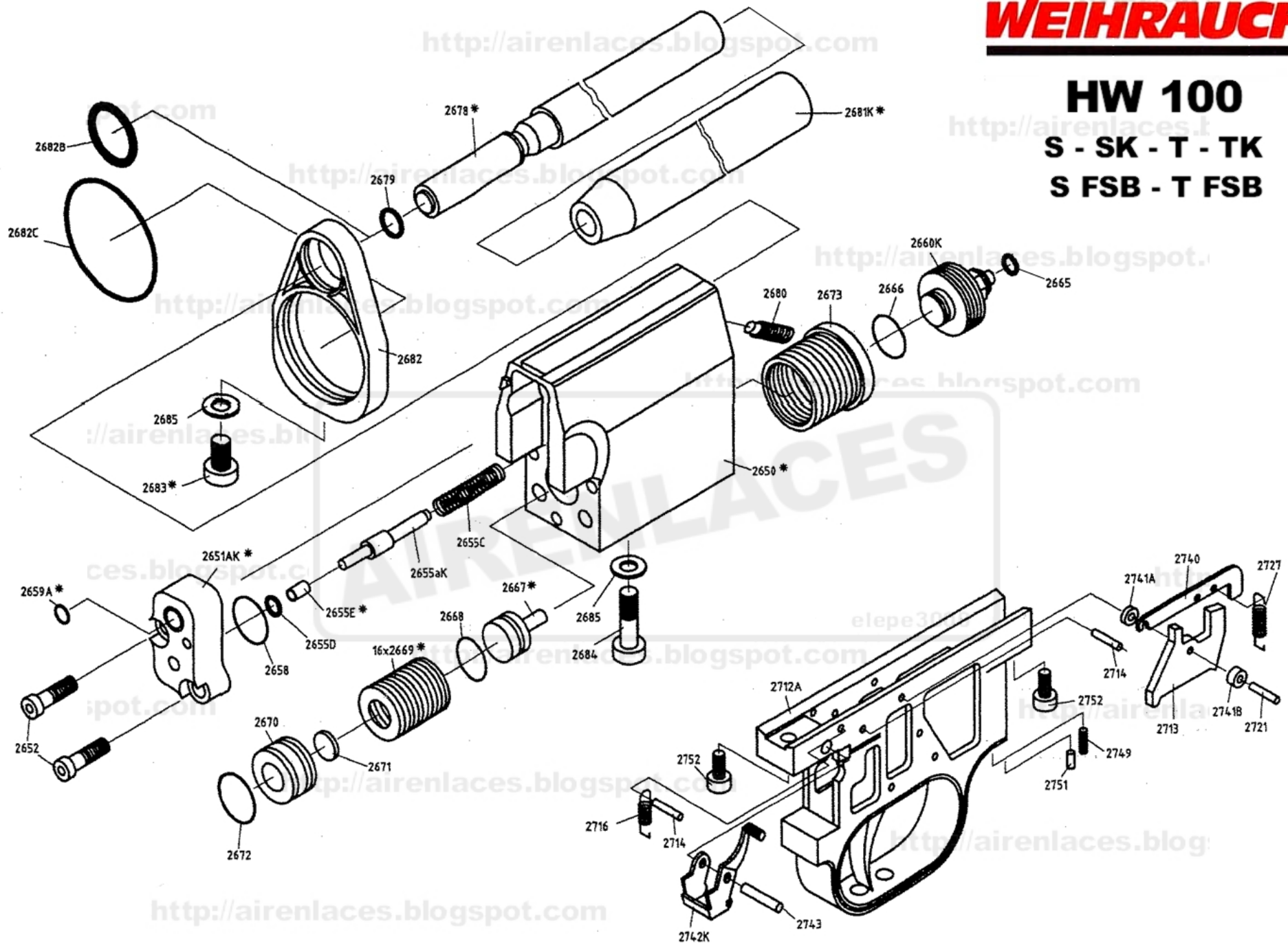


HW 100 S - SK - T - TK S FSB - T FSB

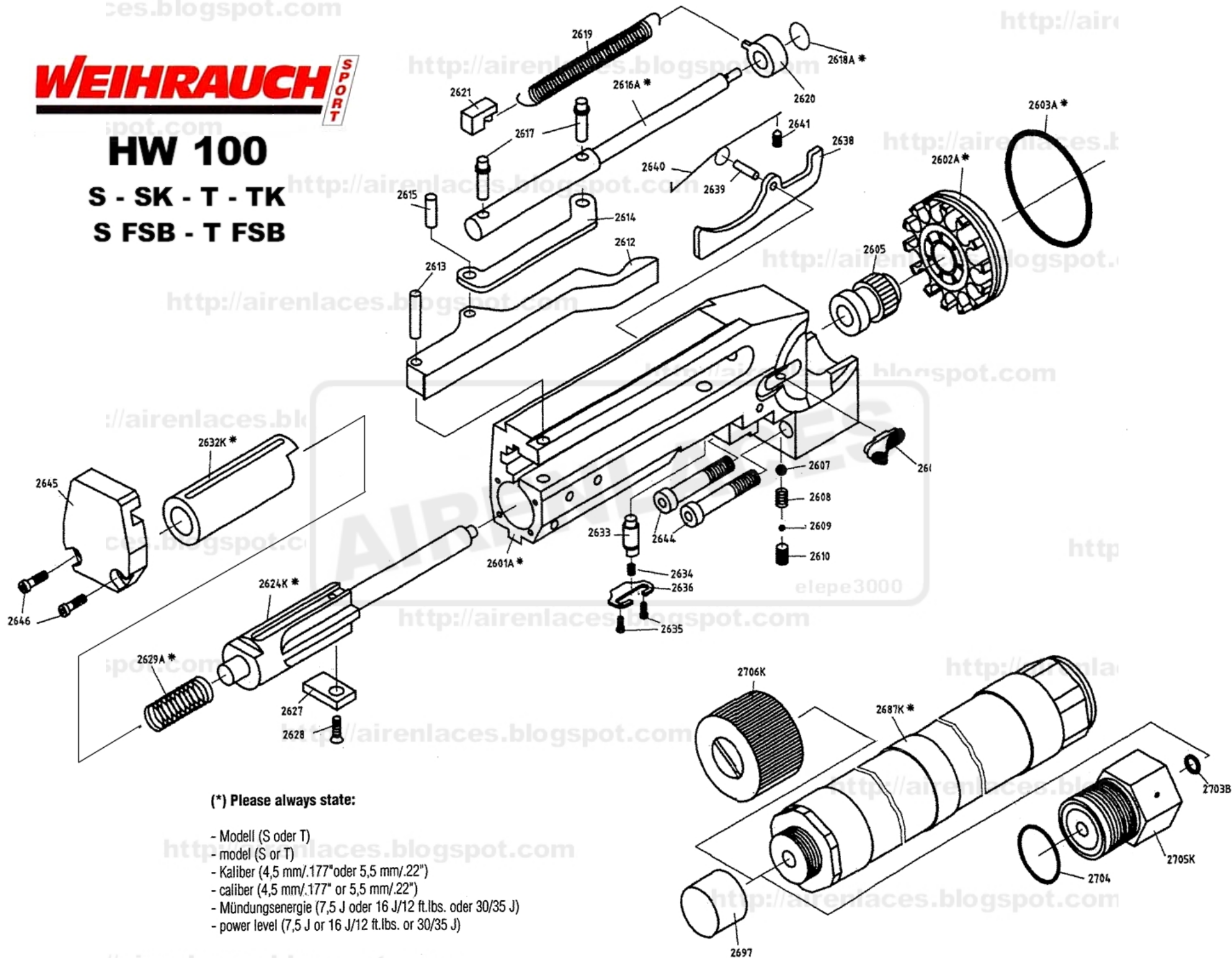


WEIHRAUCH SPORT

HW 100

S - SK - T - TK

S FSB - T FSB



(*) Please always state:

- Modell (S oder T)
- model (S or T)
- Kaliber (4,5 mm/.177" oder 5,5 mm/.22")
- caliber (4,5 mm/.177" or 5,5 mm/.22")
- Mündungsenergie (7,5 J oder 16 J/12 ft.lbs. oder 30/35 J)
- power level (7,5 J or 16 J/12 ft.lbs. or 30/35 J)

HW 100

S - SK - T - TK - S FSB - T FSB

Ref	Article	Ref	Article
2601 A*	receiver	2658	o-ring
2602 A*	magazine	2659 A*	o-ring
2602 K*	single loader	2660 K	main valve, complete
2603 A*	o-ring	2665	o-ring
2605	magazine axle	2666	o-ring
2606	magazine securing slide	2667 *	pressure regulating piston
2607	ball	2668	o-ring
2608	spring	2669 *	disc spring (16x speeded)
2609	pin	2670	pressure regulating screw
2610	screw	2671	disk
2612	cocking lever	2672	o-ring
2613	pin for No. 2612	2673	nut
2614	plate	2678 A*	barrel
2615	pin for No. 2614	2679	o-ring
2616 A*	loading bolt	2680	screw
2617	pin for No. 2616 (2x speeded)	2682	maintaining ring
2618 A*	o-ring	2682 B	o-ring for No. 2682
2619	spring for No. 2616	2682 C	o-ring for No. 2682
2620	bolt collar for spring	2683	screw for No. 2682
2621	spring retainer	2684	screw
2624 K*	hammer	2685	washer
2627	plate for No. 2624	2687 K*	air cylinder
2628	screw for No. 2627	2697	cylinder dust cap
2629 A*	spring	2703 B	o-ring
2632 K*	rivet	2704	o-ring
2633	securing bolt for No. 2624	2705 K	adaptor (200 bar)
2634	spring for securing bolt	2706 K	air-venting tap
2635	screw (2x speeded)	2712 A	trigger housing
2636	plate for No. 2634	2713	sear
2638	indexing plate	2714	pin
2639	pin for No. 2638	2716	spring for No. 2715
2640	spring for No. 2638	2721	pin
2641	screw	2727	spring for No. 2725
2644	screw (2x speeded)	2740	plate for spring
2645	cover plate	2741 A	roller for sear
2646	screw (2x speeded)	2741 B	roller for sear
2650 *	valve housing	2742 K	safety lever
2651 AK*	inset for valve housing	2743	pin for No. 2742
2652	screw (2x speeded)	2749	screw for weight adjustment
2655 AK	valve	2751	bolt
2655 C	spring	2752	screw for trigger housing
2655 D	o-ring	2760 T	thumbhole stock, ambdxx
2655 E*	valve housing	2761 S	sport stock, right



HW 100 S



HW 100 S K



HW 100 T



HW 100 T K



HW 100 S FSB



HW 100 T FSB