

INVICTUS



INVICTUS I SPORTING



INVICTUS I TRAP AT



INVICTUS I ASCENT SPORTING



INVICTUS I IMPACT SPORTING



+39 030 89 66 144 r.a.
www.caesarguerini.it

In our ongoing pursuit to make the best Target shotgun possible, Caesar Guerini has created the Invictus. Featuring the greatest advancement in over-and-under durability in many years - the Invictus System. For the first time you can measure the lifespan of your shotgun not by how long you can shoot it, but how long your children and grandchildren can. To see how the Invictus system works along with an extensive list of new features visit our website today.

Gerry Piccoli Studio 1-2015

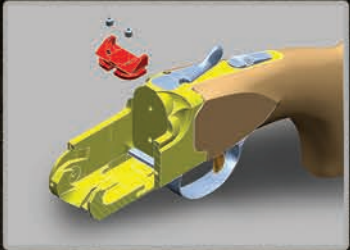
ONE
MILLION
ROUNDS



CAESAR
GUERINI

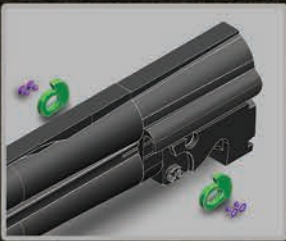


The **Invictus Block** significantly increases the locking surface area between the barrel and the action, dramatically increasing durability. This part is also replaceable multiplying the longevity of the action. The result is a gun that is more durable from the start, but also can be rebuilt in a way no other over-and-under can.



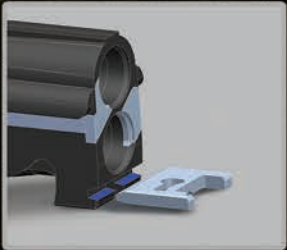
The **wider frame** has larger bearing surfaces between the action and fore-end iron increasing strength while reducing friction.

An **elastomer bushing** has been added to the fore-end assembly to reduce vibration between the pushbutton rod and wood.



The revolutionary **Invictus Cams** eliminate conventional hinge pins and trunnions. This system makes the Invictus the first double gun that can move the relationship of the barrels to the action. This allows the barrels to be moved rearward to eliminate any potential "off face" condition.

The new **DPS (Durability, Precision, Speed)** trigger incorporates redesigned hammers with a different geometry and tighter tolerances. Additionally, the hammers are coated with an industrial chrome that is designed to have a low co-efficient of friction and provide superior lubricity. This makes the trigger durable, precise and consistent.



The **contact** between the bolt and monoblock has been enlarged to reduce wear while increasing strength.