

- Underhammer Rifle -

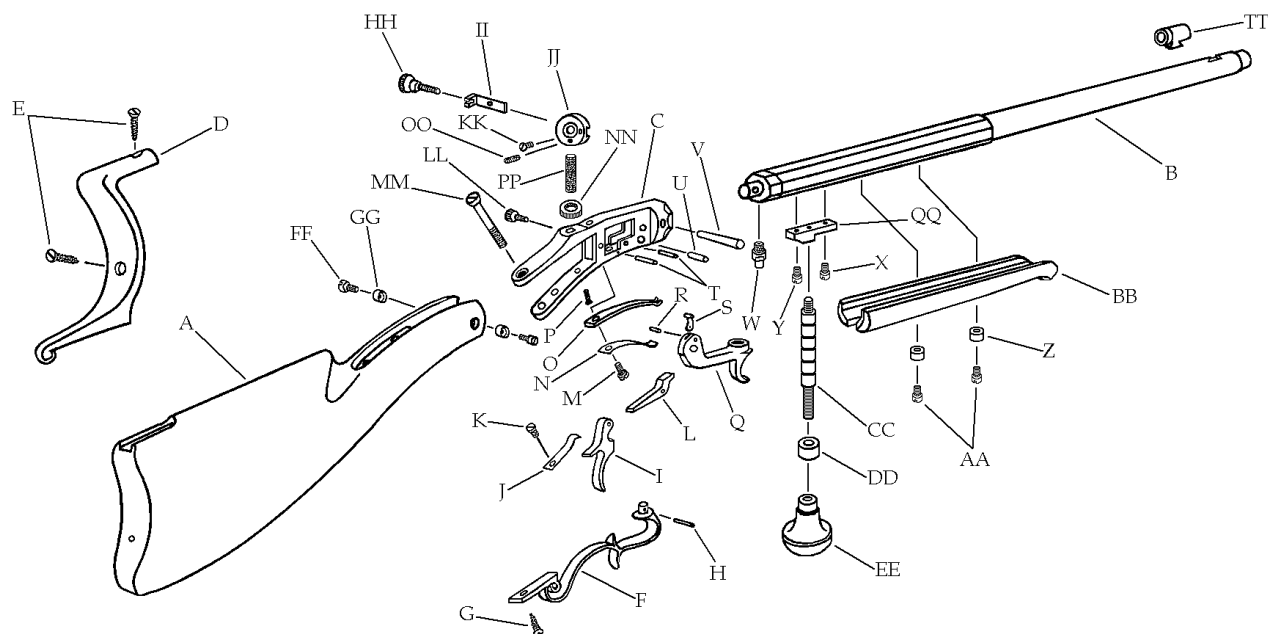
Models:

R-1300

.40 cal. perc. 1-20"
Blued Barrel

R-1300L

.40 cal. perc. 1-20"
De Luxe Blued Barrel



Description	Reference	Description	Reference
A Rear Stock Walnut (Finished).....	FCS131029	T Trigger/Sear Pin (2).....	131052
B Barrel Assembly Blued (Finished) .40 cal. perc. (twist 1-20").....	FB131000	U Hammer Pin.....	131032
Barrel Assembly De Luxe Blued (Finished) .40 cal. perc. (twist 1-20").....	FB131000-L	V Barrel Locking Pin.....	131028
C Frame.....	130025	W Nipple Percussion Only.....	M22940
Frame De Luxe.....	130025-L	X Knob Base Fore Screw.....	131022
D Buttpad.....	130026	Y Knob Base Rear Screw.....	131023
Buttpad De Luxe.....	130026-L	Z Fore Stock Bushing (2).....	131019
E Buttpad Screw (2).....	131030	AA Fore Stock Mounting Screw (2).....	131020
F Trigger Guard.....	130024	BB Fore Stock Walnut (Finished).....	FCS131017
Trigger Guard De Luxe.....	130024-L	CC Knob Extension.....	131025
G Trigger Guard Screw.....	40027	DD Knob Bushing.....	131027
H Trigger Guard Pin.....	131031	Knob Bushing De Luxe.....	131027-L
I Trigger.....	131039	EE Knob.....	131026
Trigger De Luxe.....	131039-L	FF Stock Screw (Side) (2).....	13003
J Trigger Spring.....	131040	GG Stock Bushing (2).....	13016
K Trigger Spring Screw.....	131041	HH Diopter Side Adjusting Screw.....	131050
L Sear.....	131036	II Diopter Slide.....	131049
M Mainspring/Sear Spring Screw.....	131035	JJ Diopter Frame.....	131048
N Sear Spring.....	131038	KK Diopter Slide Locking Screw.....	70121
O Mainspring.....	131034	LL Diopter Locking Screw.....	131051
P Trigger Take-up Adjustment Screw.....	60607	MM Stock Screw (Top).....	131042
Q Hammer.....	130023	NN Diopter Adjusting Nut.....	131046
Hammer De Luxe.....	130023-L	OO Diopter Vertical Adjusting Screw Pin.....	400017
R Pivoting Tumbler Arm Pin.....	131033	PP Diopter Vertical Adjusting Screw.....	131045
S Pivoting Tumbler Arm.....	75502	QQ Knob Base.....	131021
		TT Front Sight (Tunnel).....	30811