

**- Shenandoah Rifle -**

**Models:**

**R-2115**

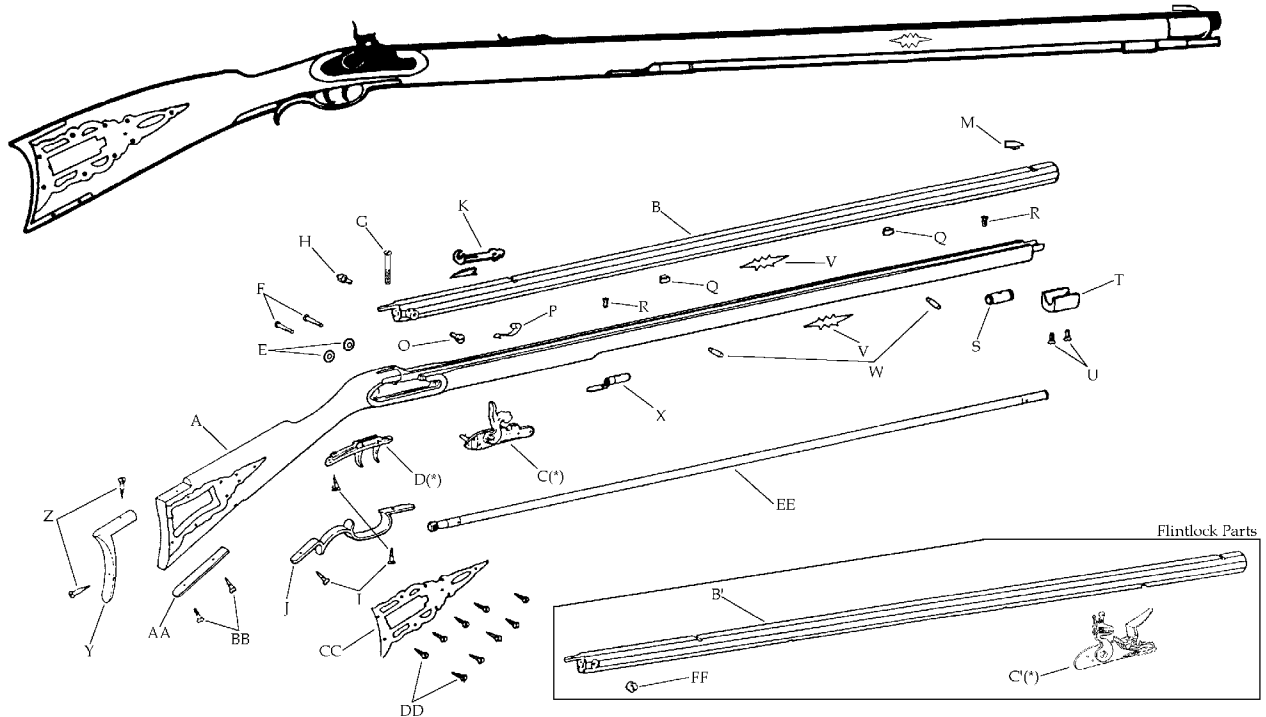
**R-2125**

.45 cal. flint. 1-66"

.45 cal. perc. 1-66"

Blued Barrel

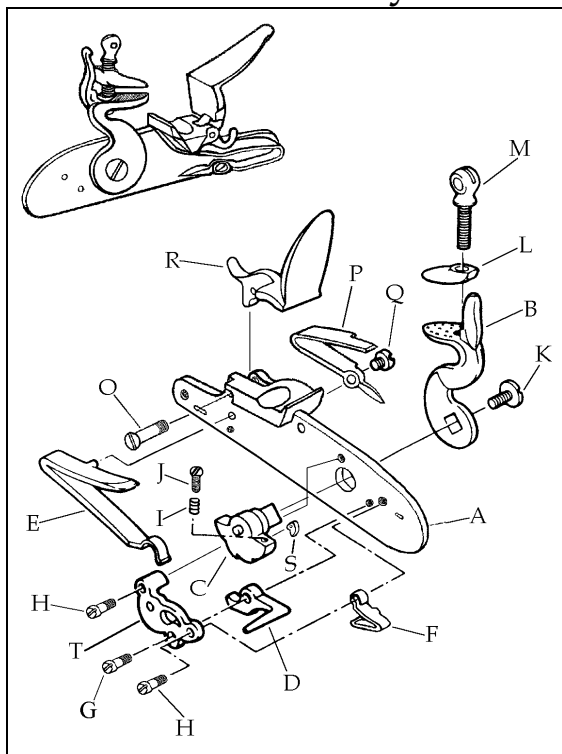
Blued Barrel



Description		Reference	Description		Reference
A	Stock Beech (Flintlock) (Finished).....	FCS21101	M	Front Sight.....	20611
	Stock Beech (Percussion) (Finished).....	FCS21201	O	Bolster Screw -Percussion Only.....	20605
B	Barrel Assembly (Kit) (Length 33 1/2")		P	Ramrod Retainig Spring.....	20621
	.45 cal. perc. (twist 1-66").....	C-202025	Q	Barrel Tenon (2).....	20233
	Barrel Assembly Blued (Finished) (Length 33 1/2")		R	Ramrod Thimble Screw (2).....	21025
	.45 cal. perc. (twist 1-66").....	FB212025	S	Front Thimble (Brass).....	20613
B'	Barrel Assembly (Kit) (Length 33 1/2")		T	Nose Cap (Brass).....	21215
	.45 cal. flint. (twist 1-66").....	C-201025	U	Nose Cap Screw (2).....	20214
	Barrel Assembly Blued (Finished) (Length 33 1/2")		V	"Hunter's Star" Small (Brass) (2).....	21039
	.45 cal. flint. (twist 1-66").....	FB211025	W	Barrel Tenon Pin. (2).....	20218
C	Percussion Lock.....	20603	X	Rear Thimble (Brass).....	21014
C'	Flintlock.....	23503	Y	Butt Plate (Brass).....	20226
D	Trigger Assembly.....	20622R	Z	Butt Plate Screw (2).....	20627
E	Lock Plate Washer (2).....	20619	AA	Toe Plate (Brass).....	21031
F	Lock Plate Washer Screw (2).....	20220	BB	Toe Plate Screw (2).....	20624
G	Tang Screw.....	20209	CC	Patchbox (Brass).....	21035
H	Nipple Percussion Only.....	20608	DD	Patchbox Screw (9).....	400024
I	Trigger Guard Screw (3).....	20624	EE	Ramrod Assembly.....	20228
J	Trigger Guard (Brass).....	20623	FF	Touch Hole Insert -Flintlock Only.....	20534
K	Rear Sight.....	22810			

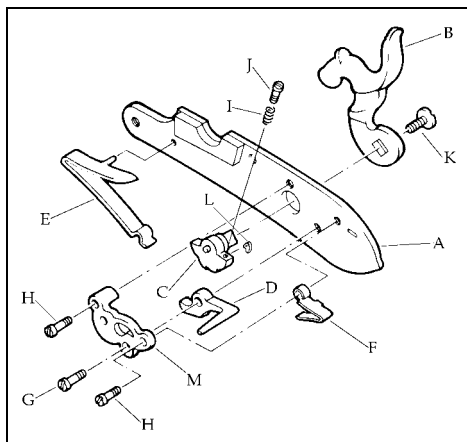
(\*) Exploded view at the reverse.

## Flintlock Assembly - Ref. 23503



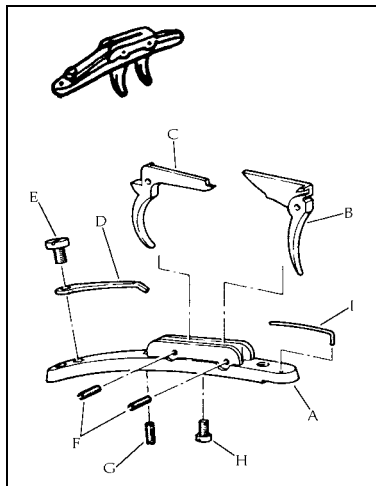
Description	Reference
A Lock Plate.....	70623
B Hammer.....	70624
C Tumbler.....	70603
D Sear.....	70504
E Mainspring.....	70505
F Sear Spring.....	70506
G Sear Screw.....	70514
H Sear Spring & Bridle Screw (2).....	70515
I Sear Adjusting Screw Spring.....	70520
J Sear Adjusting Screw.....	70518
K Hammer Screw.....	75512P
L Top Jaw.....	70309
M Top Jaw Screw.....	70513L
O Frizzen Screw.....	70627
P Frizzen Spring.....	70625
Q Frizzen Spring Screw.....	70628
R Frizzen.....	70626
S Fly.....	70611
T Bridle.....	70508

## Percussion Lock Assembly - Ref. 20603



Description	Reference
A Lock Plate.....	70501
B Hammer.....	70602
C Tumbler.....	70603
D Sear.....	70504
E Mainspring.....	70505
F Sear Spring.....	70506
G Sear Screw.....	70514
H Sear Spring & Bridle Screw (2).....	70515
I Sear Adjusting Screw Spring.....	70520
J Sear Adjusting Screw.....	70518
K Hammer Screw.....	75512P
L Fly.....	70611
M Bridle.....	70508

## Trigger Assembly - Ref. 20622R



Description	Reference
A Trigger Plate.....	60601R
B Front Trigger.....	60602
C Rear Trigger.....	60603
D Rear Spring.....	60604R
E Rear Spring Screw.....	60606
F Trigger Pin (2).....	60609
G Rear Trigger Adjustment Screw.....	60608
H Front Trigger Adjustment Screw.....	60607
I Front Spring.....	60605