

- Hawken Match Rifle -

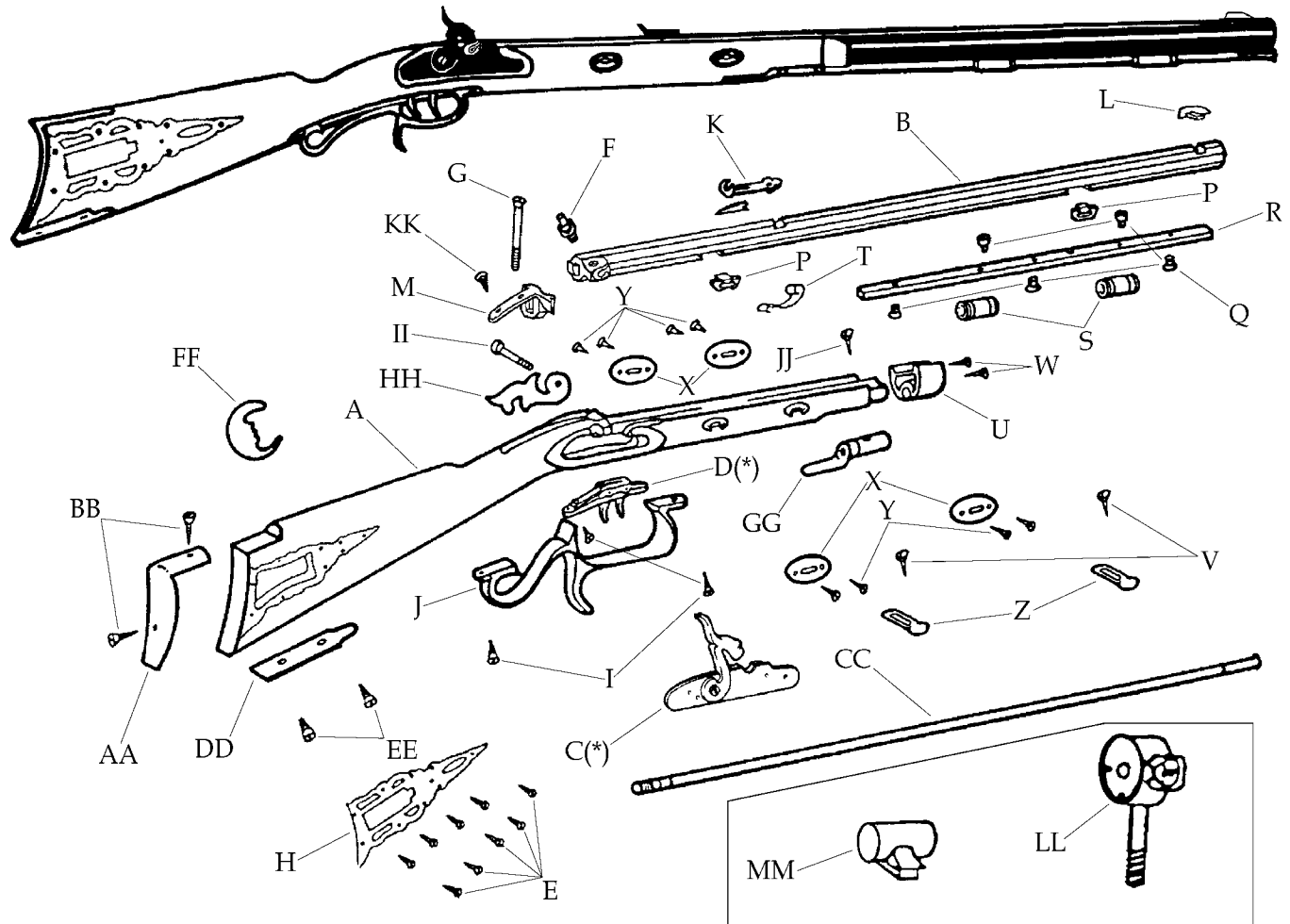
Models:

R-3081

.451 cal. perc. 1-20"
(Henry type Rifling)
Blued Barrel

R-3081-C

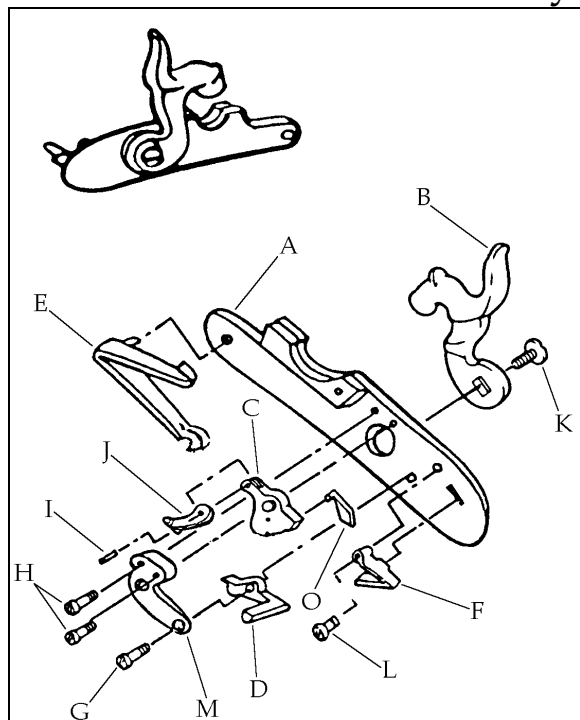
.451 cal. perc. 1-20"
(Henry type Rifling)
Blued Barrel



Description	Reference	Description	Reference
A Stock Walnut Checkered (Percussion).....	FCS30801	T Ramrod Retaining Spring.....	20621
B Barrel Assembly (Kit) (Length 32")		U Nose Cap (Engraved Brass).....	30815
.451 cal. perc. (twist 1-20").....	C-308451	V Barrel Tennon Wedge Screw.....	36017
Barrel Assembly Blued (Finished) (Length 32")		W Nose Cap Screw (2).....	20827
.451 cal. perc. (twist 1-20").....	FB308451	X Wedge Plate (4) (Engraved Brass).....	30816
C Percussion Lock.....	25003	Y Wedge Plate Screw (8).....	20617
D Trigger Assembly.....	20622R	Z Wedge.....	25018
E Patchbox Screw (9).....	400024	AA Butt Plate (Engraved Brass).....	30826
F Nipple Percussion Only.....	20608	BB Butt Plate Screw (2).....	20627
G Tang Screw (Front).....	25009	CC Ramrod Assembly.....	20828
H Patchbox (Brass).....	30835	DD Toe Plate (Engraved Brass).....	30831
I Trigger Guard Screw (2).....	20624	EE Toe Plate Screw (2).....	20624
J Trigger Guard (Engraved Brass).....	30823	FF Quarter Moon.....	20836L
K Rear Sight.....	22810	GG Rear Thimble (Engraved Brass).....	30814
L Front Sight.....	20611	HH Side Plate (Brass).....	20816
M Tang.....	30806	II Lock Screw.....	25020
P Barrel Tennon (2).....	20533	JJ Ramrod Thimble Screw.....	21025
Q Rib & Thimble Screw (5).....	20614	KK Wood Tang Screw (Rear).....	20624
R Barrel Rib.....	20812	LL Rear Sight (Diopter) (R-3081-C).....	30810
S Thimble (2).....	20613	MM Front Sight (Tunnel) (R-3081-C).....	30811

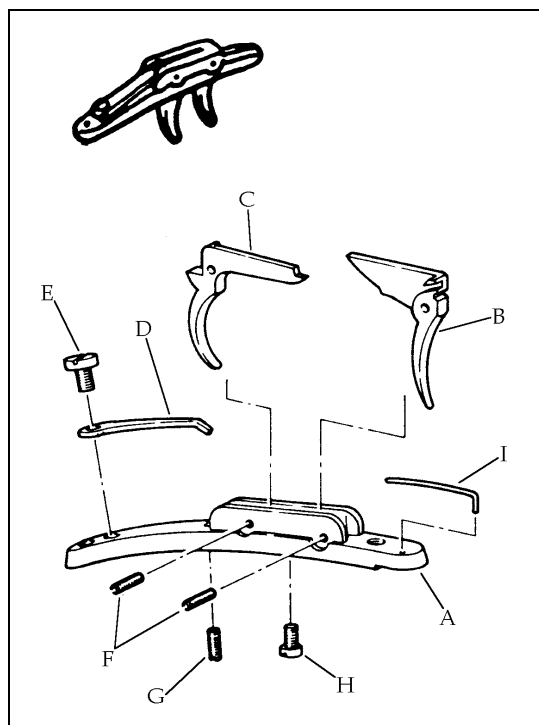
(*) Exploded view at the reverse.

Percussion Lock Assembly - Ref. 25003



	Description	Reference
A	Lock Plate.....	75501
B	Hammer.....	75602
C	Tumbler.....	75503
D	Sear.....	75504
E	Mainspring.....	75505
F	Sear Spring.....	75506
G	Sear Screw.....	75514
H	Bridle Screw.....	75515
I	Tumbler Pin.....	75507
J	Pivoting Tumbler Arm.....	75502
K	Hammer Screw.....	75512
L	Sear Spring Screw.....	75513
M	Bridle.....	75508
O	Fly.....	75511

Trigger Assembly - Ref. 20622R



	Description	Reference
A	Trigger Plate.....	60601R
B	Front Trigger.....	60602
C	Rear Trigger.....	60603
D	Rear Spring.....	60604R
E	Rear Spring Screw.....	60606
F	Trigger Pin (2).....	60609
G	Rear Trigger Adjustment Screw.....	60608
H	Front Trigger Adjustment Screw.....	60607
I	Front Spring.....	60605