

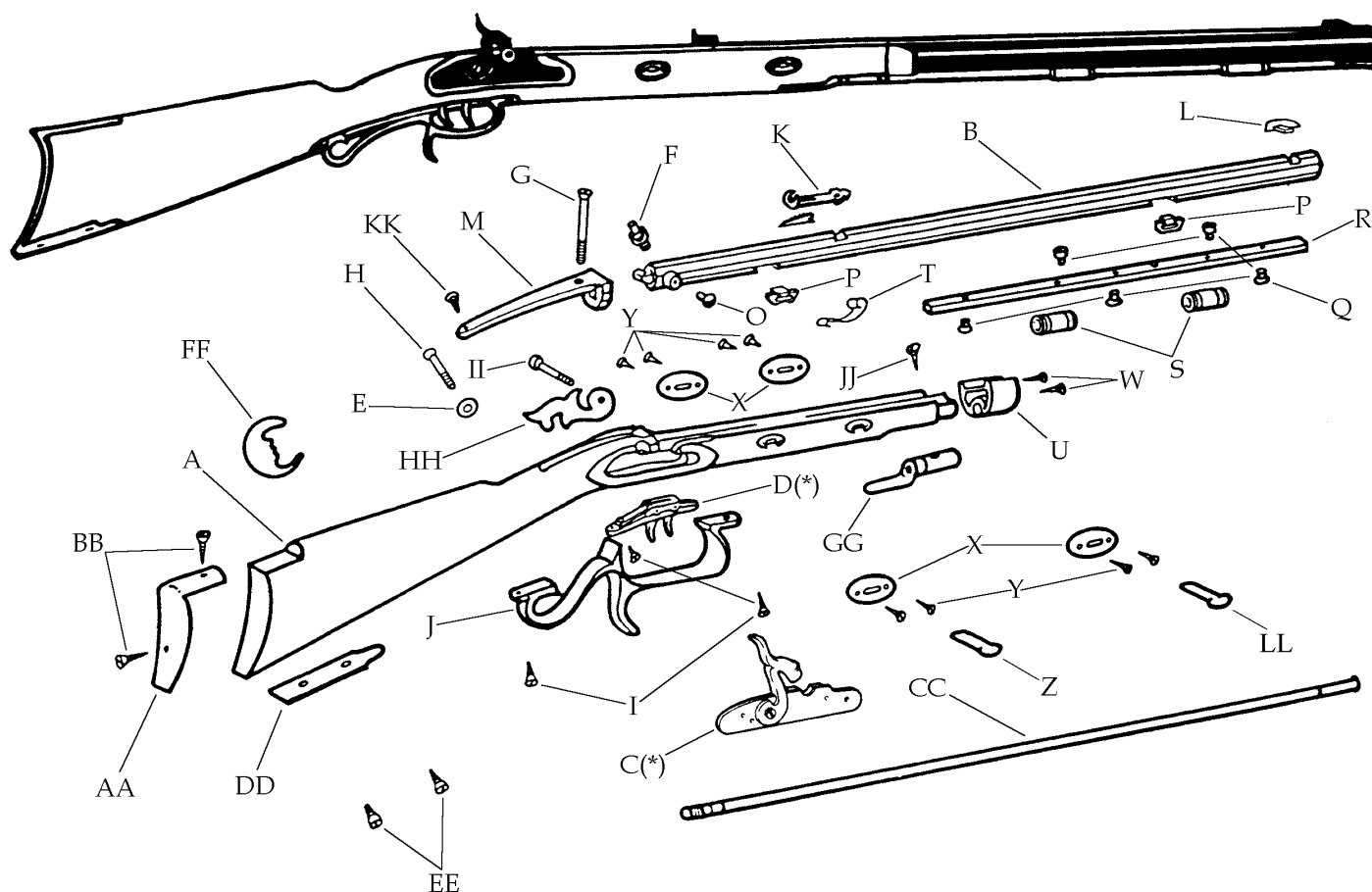
- Hawken Rifle -

Models:

R-2085

.45 cal. Perc. 1-32"

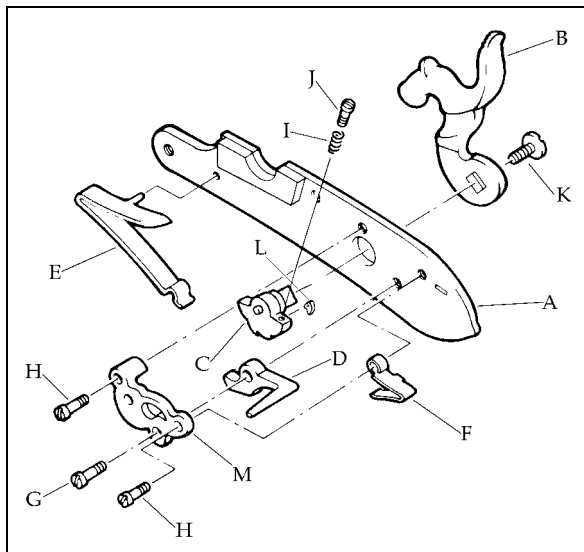
Blued Barrel



Description	Reference	Description	Reference
A Stock Walnut (kit).....	K-20801	R Barrel Rib.....	20612
Stock Walnut (Percussion) (Finished).....	FCS20801	S Thimble (2) (Brass).....	20613
B Barrel Assembly (Kit) (Length 32")		T Ramrod Retaining Spring.....	20621
.45 cal. perc. (twist 1-32").....	C-208025	U Nose Cap (Brass).....	20815
Barrel Assembly Blued (Finished) (Length 32")		W Nose Cap Screw (2).....	20827
.45 cal. perc. (twist 1-32").....	FB208025	X Wedge Plate (4) (Brass).....	22216L
C Percussion Lock.....	20803	Y Wedge Plate Screw (8).....	20617
D Trigger Assembly.....	20622R	Z Rear Wedge.....	22218-3
E Lock Washer.....	20840	AA Butt Plate (Brass).....	20826
F Nipple Percussion Only.....	20608	BB Butt Plate Screw (2).....	20627
G Tang Screw (Front).....	20841	CC Ramrod Assembly.....	20828
H Rear Lock Screw.....	20620	DD Toe Plate (Brass).....	20831
I Trigger Guard Screw.....	20624	EE Toe Plate Screw (Brass).....	20624
J Trigger Guard (Brass).....	20823	FF Quarter Moon (Brass).....	20836L
K Rear Sight.....	22810	GG Rear Ramrod Thimble (Brass).....	21014
L Front Sight.....	20611	HH Side Plate (Brass).....	20816
M Tang.....	20806	II Front Lock Screw.....	20820
O Bolster Screw Percussion Only.....	20605	JJ Ramrod Thimble Screw.....	21025
P Barrel Tennon (2).....	20533	KK Tang Screw (Rear) (Wood).....	20624
Q Rib & Thimble Screw (5).....	20614	LL Front Wedge.....	22218-2

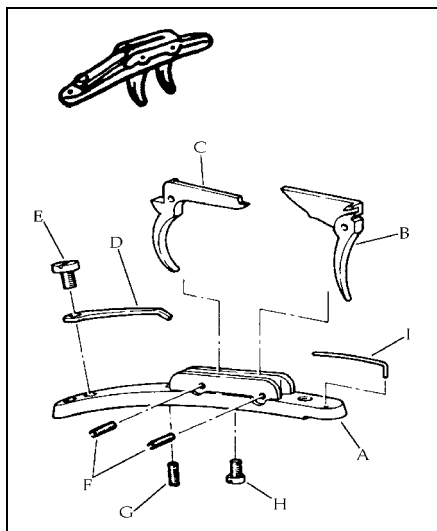
(*) Exploded view at the reverse.

Percussion Lock Assembly - Ref. 20803



	Description	Reference
A	Lock Plate.....	70801-I
B	Hammer.....	70802
C	Tumbler.....	70603
D	Sear.....	70504
E	Mainspring.....	70505
F	Sear Spring.....	70506
G	Sear Screw.....	70514
H	Sear Spring & Bridle Screw (2).....	70515
I	Sear Adjusting Screw Spring.....	70520
J	Sear Adjusting Screw.....	70518
K	Hammer Screw.....	75512P
L	Fly.....	M70611
M	Bridle.....	70508

Trigger Assembly - Ref. 20622R



	Description	Reference
A	Trigger Plate.....	60601R
B	Front Trigger.....	60602
C	Rear Trigger.....	60603
D	Rear Spring.....	60604R
E	Rear Spring Screw.....	60606
F	Trigger Pin (2).....	60609
G	Rear Trigger Adjustment Screw.....	60608
H	Front Trigger Adjustment Screw.....	60607
I	Front Spring.....	60605