

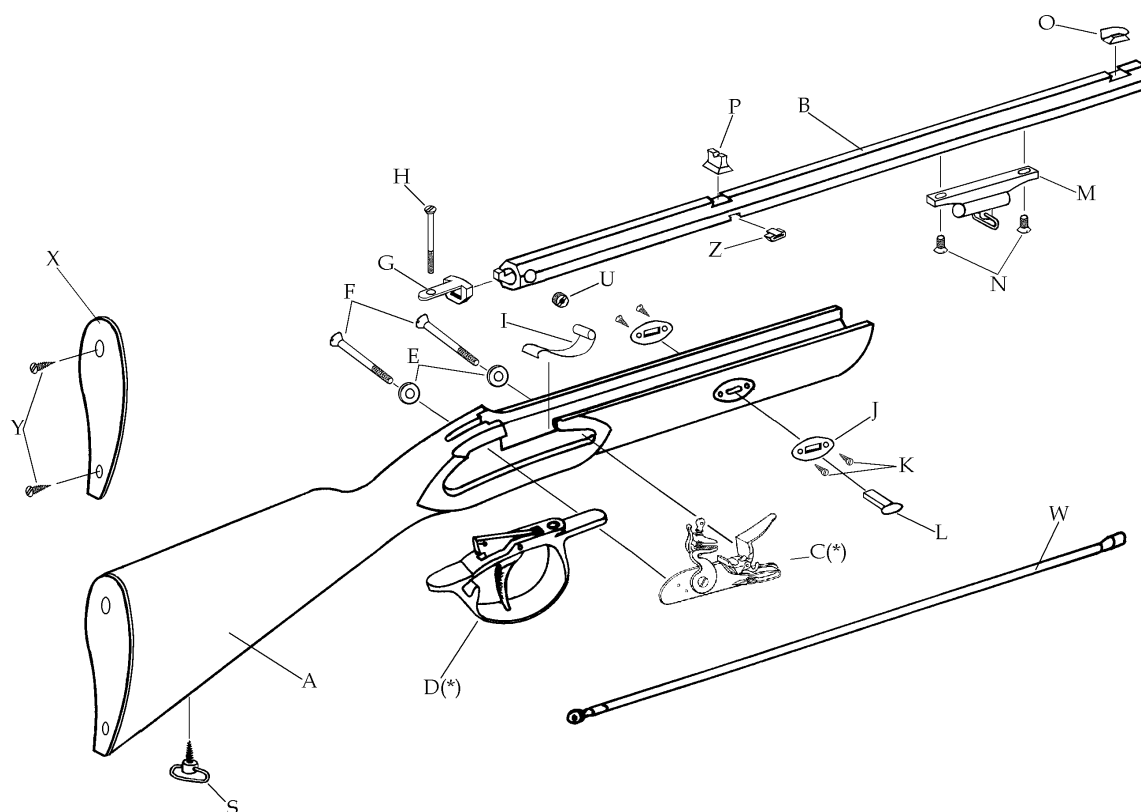
Deerhunter Rifle

Models:

R-3595

.45 cal. flint. 1-66"

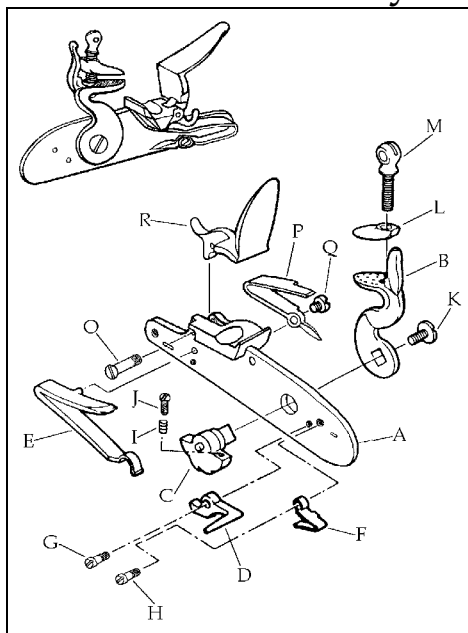
Blued Barrel



Description		Reference	Description		Reference
A	Stock (Beech) (kit).....	K-36001	J	Stock Plate (2).....	36016
	Stock Beech (Flintlock) (Finished).....	FCS35901	K	Stock Plate Screw (4).....	36017
B	Barrel Assembly (Kit) (Length 24")		L	Barrel Wedge.....	22218-3
	.45 cal. Flint. (twist 1-66").....	C-359025	M	Ramrod Thimble/Rib/Swivel.....	36013
	Barrel Assembly Blued (Finished) (Length 24")		N	Thimble/Rib Screw (2).....	36014
	.45 cal. Flint. (twist 1-66").....	FB359025	O	Front Sight (Brass Blade).....	36011
C	Flintlock Lock.....	45903	P	Rear Sight.....	20210
D	Trigger/Trigger Guard Assembly (Blackened).....	36022	S	Stock Sling Swivel.....	25046
E	Lock Plate Washer (2).....	22819	U	Flash Hole Liner – Flintlock Only.....	20534
F	Lock Plate Screw (2).....	20620	W	Ramrod Assembly	36028M
G	Barrel Tang.....	20606	X	Iron Butt Plate 45 cal. Only.....	36026
H	Tang Screw.....	20841	Y	Iron Butt Plate Screw (2) 45 cal. Only.....	20627
I	Ramrod Retaining Spring.....	20621	Z	Barrel Tenon.....	20533

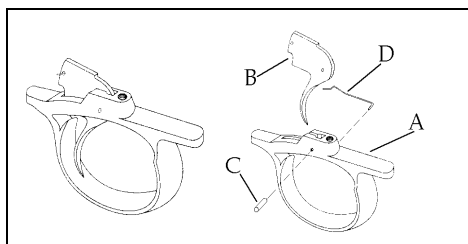
(*) Exploded view at the reverse.

Flintlock Assembly - Ref. 45903



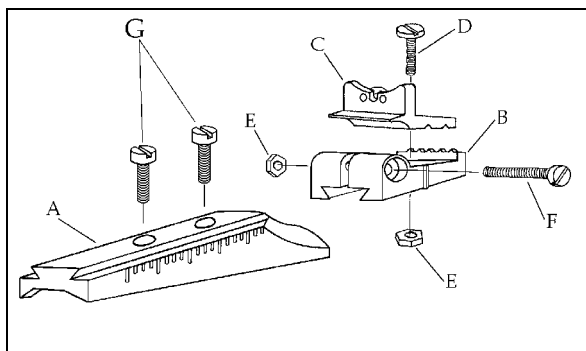
Description	Reference
A Lock Plate.....	70623
B Hammer.....	70624
C Tumbler.....	70603
D Sear.....	70504
E Mainspring.....	70505
F Sear Spring.....	70506
G Sear Screw.....	70514
H Sear Spring Screw.....	70121
I Sear Adjusting Screw Spring.....	70520
J Sear Adjusting Screw.....	70518
K Hammer Screw.....	75512P
L Top Jaw.....	70309
M Top Jaw Screw.....	70513L
O Frizzen Screw.....	70627
P Frizzen Spring.....	70625
Q Frizzen Spring Screw.....	70628
R Frizzen.....	70626

Trigger Assembly - Ref. 36022



Description	Reference
A Trigger Guard/Trigger Plate.....	36023
B Trigger.....	60402-Z
C Trigger Pin.....	36020
D Trigger Spring.....	36043

Fiber Optic Rear Sight - Ref. 36830-FO



Description	Reference
A Rear Sight Base.....	36833
B Elevator Base.....	50614
C Rear Sighting Blade with Fiber Optic.....	50615-FO
D Windage Adjustment Locking Screw.....	50617
E Hex. Nut (2).....	50618
F Elevation Adjustment Locking Screw.....	50616
G Rear Sight Mounting Screw (2).....	50623