

## - William Parker Match Pistol -

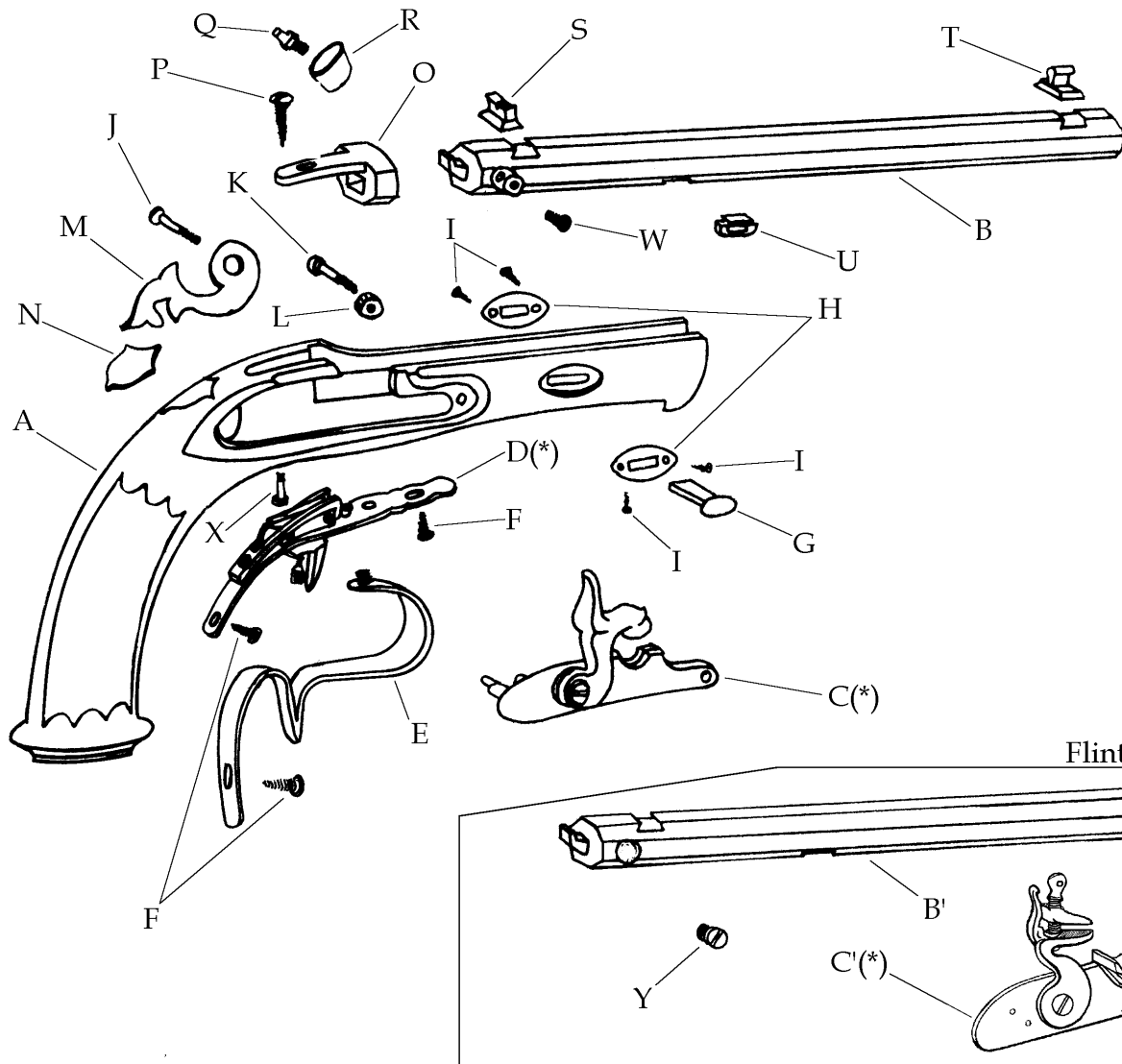
Models:

**P-1235**

.45 cal. flint. 1-16"  
White Tempel Barrel

**P-1245**

.45 cal. perc. 1-16"  
White Tempel Barrel

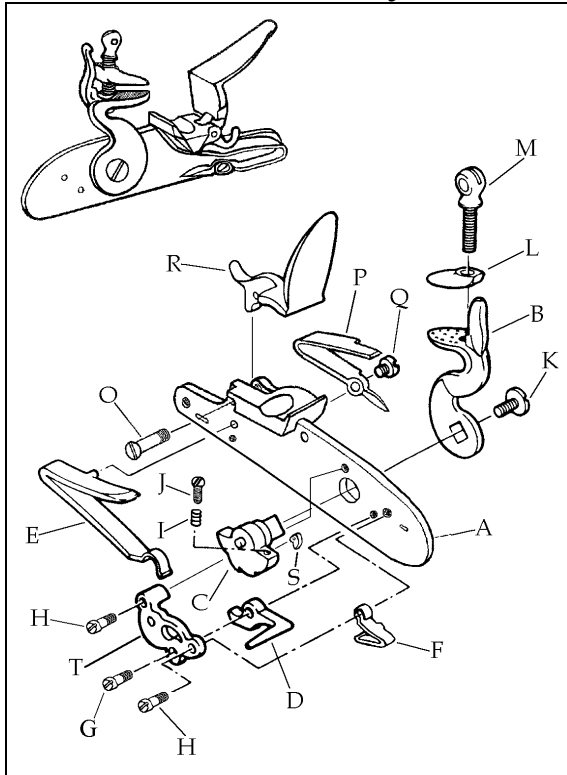


Description	Reference	Description	Reference
A Stock Walnut (Flintlock) (Finished).....	FCS12301	H Wedge Plate (2) (German Silver).....	21836
Stock Walnut (Percussion) (Finished).....	FCS12401	I Wedge Plate Screw (4).....	21817
B Barrel Assembly (Kit)		J Rear Lock Screw.....	11420T
.45 cal. perc. (twist 1-16").....	C-124025	K Front Lock Screw.....	20820T
Barrel Assembly White Tempel (Finished)		L Stock Bushing.....	20840T
.45 cal. perc. (twist 1-16").....	FB124025	M Stock Plate (German Silver).....	21816
B' Barrel Assembly (Kit)		N Stock Shield (German Silver).....	12438-A
.45 cal. flint. (twist 1-16").....	C-123025	O Tang (White Tempel).....	20606T
Barrel Assembly White Tempel (Finished)		P Tang Screw.....	20625T
.45 cal. flint. (twist 1-16").....	FB123025	Q Nipple Percussion Only.....	20608
C Percussion Lock.....	11403	R Flash Cup (German Silver) Percussion Only....	12439A
C' Flintlock.....	23503T	S Rear Sight.....	20210
D Trigger Assembly.....	12422	T Front Sight.....	12411
E Trigger Guard.....	12423	U Barrel Tennon.....	M20533
F Trigger Guard Screw (3).....	20624T	W Bolster Screw Percussion Only.....	20605T
G Wedge.....	11418	Y Flash Hole Liner Flintlock Only.....	20534

(\*) Exploded view at the reverse.

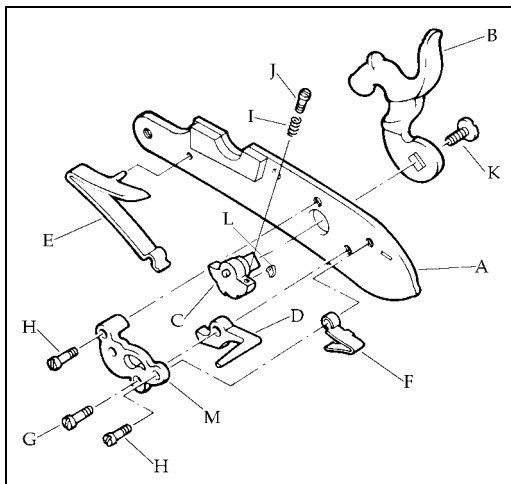
# TRADITIONS™

## Flintlock Assembly - Ref. 23503T



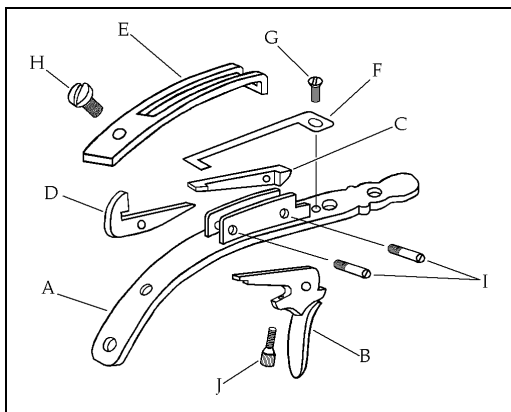
Description	Reference
A Lock Plate.....	70623T
B Hammer.....	70624T
C Tumbler.....	70603
D Sear.....	70504
E Mainspring.....	70505
F Sear Spring.....	70506
G Sear Screw.....	70514
H Sear Spring & Bridle Screw (2).....	70515
I Sear Adjusting Screw Spring.....	70520
J Sear Adjusting Screw.....	70518
K Hammer Screw.....	75512P
L Top Jaw.....	70309T
M Top Jaw Screw.....	70513L
O Frizzen Screw.....	70627
P Frizzen Spring.....	70625
Q Frizzen Spring Screw.....	70628
R Frizzen.....	70626
S Fly.....	70611
T Bridle.....	70508

## Percussion Lock Assembly - Ref. 11403



Description	Reference
A Lock Plate.....	71401
B Hammer.....	70602T
C Tumbler.....	70603
D Sear.....	70504
E Mainspring.....	70505
F Sear Spring.....	70506
G Sear Screw.....	70514
H Sear Spring & Bridle Screw (2).....	70515
I Sear Adjusting Screw Spring.....	70520
J Sear Adjusting Screw.....	70518
K Hammer Screw.....	75512P
L Fly.....	70611
M Bridle.....	70508

## Trigger Assembly - Ref. 12422



Description	Reference
A Trigger Plate.....	033-12401
B Trigger.....	033-12402
C Sear Front.....	033-12403
D Sear Retaining.....	033-12406
E Sear Front Spring.....	033-12404
F Sear Retaining Spring.....	033-12405
G Sear Retaining Spring Screw.....	033-12409
H Rear Spring Screw.....	033-12408
I Trigger & Sear Pin (2).....	033-12410
J Trigger Adjustment Screw.....	033-12407