

Ithaca Gun Company offers customizing for your Ithaca firearm to make it unique and personal. Custom Engraving is perfect for special interest, organizations, shooting clubs, conservation societies, retirement gifts and family of sportsmen. Our receivers can be your canvas to illustrate your personal symbol. If you have a picture of special image you would like on a shotgun, our skilled machinist will bring it to life! Call Ithaca today for your custom engraving quote. 1-877-648-4222

Approximate lead time for custom engraving is 8 weeks. We strongly suggest this much lead time for custom orders for birthdays, banquets, anniversaries, holidays, etc. The complexity of the design will determine the time frame.

***Ithaca Gun***  
***Company***

420 North Warpole Street  
Upper Sandusky, OH 43351

[www.ithacagun.com](http://www.ithacagun.com)  
Made in the U.S.A.

***Ithaca Gun***  
***Company***

2013 Catalog  
Made in the USA





Dear Friends,

Our Journey began in 2007 when our ownership acquired the assets of Ithaca Gun Company to fulfill our vision of building the finest American made firearm. We continued to use the methods of old but soon realized that to achieve our goals we needed to manufacture all of our parts in house. To that end we invested heavily in new CNC equipment and experienced personnel. At Ithaca the craftsmanship and pride that goes into every firearm is a reflection of the employees working on it, from the solid block of high-grade steel for the receiver the component parts machined to precise dimensional tolerances and the final assembly by true gunsmiths. Every firearm is proof tested before it leaves the factory assuring you of the pride and quality of the finest American made products.

These are the corners that cannot be cut if we are to produce a truly unique firearm that will not only last you a lifetime, but can be passed on for generations. Today, we are still responding to customers’ needs. We have developed new capabilities, in both new and existing products. Our goal, however, remains the same: offer the best products with unmatched customer service. Yes, we remain traditional in some ways; our firearms are hand fitted and if you call the factory, a person answers the phone, but we see these things as important parts of our heritage.

We thank you for your support in continuing the tradition of Ithaca.

Sincerely,

David Dlubak, President



Table of Contents

Introduction .....2

History .....4

Barrels.....6

.45 Caliber 1911 .....8

Model 37

Featherlight.....10

Waterfowl.....12

TurkeySlayer.....14

DeerSlayer .....16

Home Defense .....18

Tactical.....20

Gun Specifications .....22

Service Information.....29



About the Cover:

Pat Gamby’s studio is located near Mount Victory, Ohio. She is best known for her scenes of rural life and animals. The cover art, “Shotzy and Red,” is an original egg tempera painting of a classic pheasant hunt with Ithaca Gun Company owner, Dave Dlubak’s, very own hunting dogs. **Signed, numbered, and titled Limited Edition giclee prints will be available for sale, visit [www.PatGamby.com](http://www.PatGamby.com).**

## **We have one aim: To make the best pump action shotguns on the planet.**

Our process starts in the hands of skilled engineers who model the gun in state-of-the-art 3D CAD software. Creating our blueprints for the machining floor in this way ensures that interference between parts is minimized and that the action of your M37 is smooth right out of the box.

Ithaca in New York relied on well over thirty processes located at different work centers for the production of the Model 37 receiver. Good guns were made in this fashion, but many of them required additional hand fitting in order to go together correctly and varied significantly from piece to piece.

At Ithaca Gun Company of Upper Sandusky, Ohio, our programmers and machinists have consolidated these many steps into cuts that are executed by machine tools with surgical accuracy. Our new guns cycle as though they have been “worn in” already, and replacement parts will fit your gun with unprecedented ease. The top radii of the receiver are matte blued to reduce glare, and we have even improved the looks of the classic game scene engraving, which is no longer roll stamped on the receiver. We also offer many options for beautifying and personalizing your gun. Just ask your local dealer or give us a call here at Itaca.

### **Receivers**

Our receivers are still machined from a block of solid steel, just as they were in the 70s. We use CNC machining centers to produce gun components that achieve a higher level of uniformity and parts interchangeability than in any Ithaca firearm before it. And, because Americans are great at making things, every part of our gun is manufactured and assembled in the USA.



### **Solderless Barrel System**

Because soldering warps the barrel and solder joints can fail, we have entirely eliminated soldering and brazing from the manufacture of Ithaca firearms. All peripheral components of the barrel are now held fast by lugs which are machined directly out of the parent material of the barrel. Our Solderless Barrel System is simply the truest, strongest barrel you will ever shoot, because its integrity has not been compromised by red-hot temperatures.

### **Stocks and Forends**

Starting with properly dried American Black Walnut blanks that have been air dried for optimal strength and stability, Ithaca processes each stock with modern cnc equipment. Solid models developed in Engineering provide our Programmers with what they need to produce the best possible cut checkered stocks. The color is rich red-brown with pleasing grain and figure; the checkering is laser cut for a consistent look and feel. Hand finishing ensures that each piece is worthy of the Ithaca name.

The comb and pitch of the semi-pistol stock for the Featherlight and Ultralight have been carefully considered to facilitate targeting and reduce upward recoil. The comb height of the monte carlo stock on the Deerslayers II and III has been optimized for scope use, but is still not too high for getting down on the open sights of the Deerslayer II. We have chosen stock dimensions that are comfortable for the greatest range of shooters. However, if you would like a stock that is tailor-made to your proportions, please get in contact with the Ithaca Custom Shop.



### **A Stock**



### **AA Stock**



### **AAA Stock**



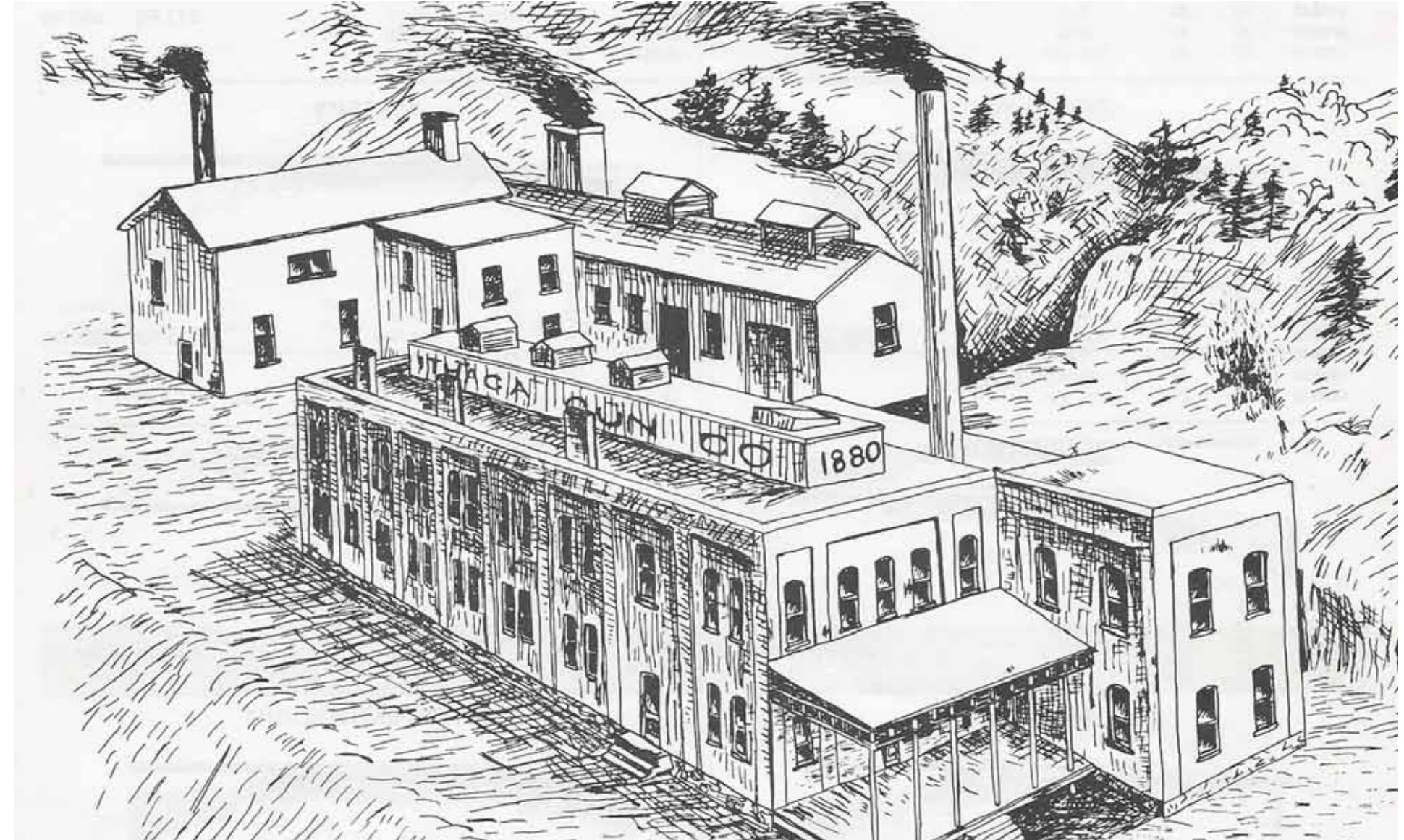


## **The Ithaca Gun Company: A Brief History**

The Ithaca Gun Company began producing fine American shotguns in Ithaca, New York in 1883. The company was founded by William Henry Baker and began making Baker's classic external hammer Double guns. In 1887, Lewis Smith acquired the assets of the company and along with George Livermore began making hammerless doubles in various designs for the next 60 plus years. In 1931, Ithaca applied for a patent for an improved firing mechanism based on the John Browning designed Model 17. In 1937, production began on the Model 37. Lou Smith, son of Lewis, along with Frank Knickerbocker began making a High-end, hand fit Single Barrel Trap gun in 1922. During the War years in the 1940's, under Smith's direction, Ithaca produced many firearms for the military including the Trench Guns (M37) and 1911a1 .45 ACP pistols. The Ithaca Gun Company was eventually sold to General Recreation in 1967. The Company continued to operate making the Fine Single Barrel Trap guns and the Model 37s, along with new Semi-Automatic designs and successful importations of SKB shotguns, Perazzi shotguns, and

Tikka Rifles to name a few. The Company was then sold to Ithaca Acquisition, Inc. in 1987. The company left the original facility in Ithaca, New York in 1989 and moved 15 miles north to the old high school in King Ferry, New York.

Late in 2005, the company was purchased by the Marshall family of Upper Sandusky, Ohio. The company was subsequently moved to its current home here in Upper Sandusky. Truckloads of old parts, fixtures, and boxes of old schematics were brought from New York, and over the next 12 to 18 months, Engineers and machinists partnered to manufacture the Model 37 again, but in a different manner: tighter tolerances, better machining practices, 100% AMERICAN materials and a much better fit and finish. In 2007, a local businessman and sportsman, David Dlubak, recognizing the quality of the "new" product and its machinists, purchased the company. All new CNC machines were brought in and the re-birth of the classic Ithaca Firearms begins...





# Ithaca Barrels

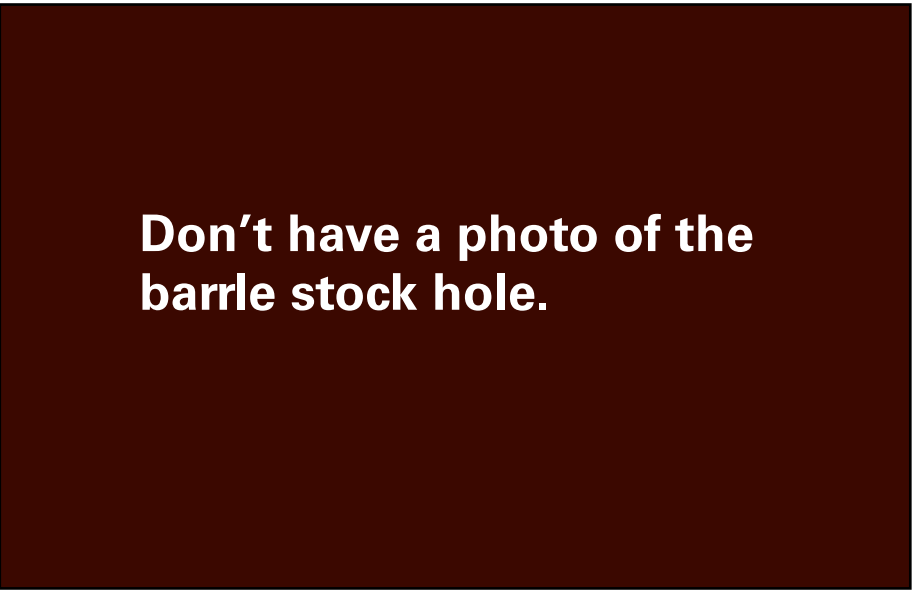
There are nearly two million Ithaca Model 37s already in the field, and many of their owners would like to outfit them with a new barrel. Just how that aim is achieved depends on the serial number of your gun.

Model 37® firearms with a serial number below 855,000 have barrels that are non-interchangeable but can be fitted by sending it back to Ithaca.

If your M37 was made before the 855,000 mark (which occurred in 1963), we will be able to furnish you with a replacement barrel for it, but you must send your gun to us for the barrel to be fitted. The process includes machine removal of existing threads, insertion of adapter and re-threading of receiver and re-bluing. Please note that once this is completed you will not be able to reuse your old barrel. Includes re-bluing at no charge.

Model 37s® with a serial number above 855,000 have interchangeable barrels (except for some Deerslayers), but often still require some custom fitting by our gunsmiths.

The thread pattern that we utilize on our interchangeable barrel field guns is the same pattern that was used by Ithaca in New York after 1963. However, Ithaca in New York used manufacturing methods that created differences between their firearms that made their barrels less than truly interchangeable. So, while some of our barrels may fit post-1963 guns off the shelf, others will require at least minor modifications to fit correctly. You may send your gun to us for the barrel head spacing to be checked and tested, and there is no additional charge for this service, or have your local gunsmith perform this fitting.



## Ithaca barrels are available in the following styles:

### Upland Shotgun Barrels

- 12 gauge M37 vent rib barrel in 26” and 28” lengths
- 12 gauge M37 field barrel with brass bead sight in 26” and 28” lengths
- 12 gauge M37 vent rib barrel in 30”lengths
- 12 gauge Home Defense barrel in 18.5” length - \$225.00
- 20 gauge M37 vent rib barrel in 26” and 28” lengths
- 20 gauge M37 field barrel with brass bead sight in 26” and 28” lengths

Briley Choke System for above - \$50.00 (Full, Modified, Improved)

### Rifled Barrels

- 12 gauge Deerslayer barrel rifled 1:28 in 24” lengths - \$275.00
- 20 gauge Deerslayer barrel rifled 1:24 in 24” lengths - 275.00

\* Send requests to: [service@ithacagun.com](mailto:service@ithacagun.com) and include serial number.





# Ithaca’s Hand Fitted, Match Grade Quality 1911 Model .45

Between 1942 and 1945, Ithaca Gun Company made 382,000 of the .45 caliber Model 1911 - A1 pistols for our military. During that time Ithaca received a Certificate of Appreciation from the federal government for the improved manufacturing procedure for the triggers.

Frames are machined using state of the art equipment from solid billets of 4140 heat treated steel. Slides are manufactured using a proprietary process and then the frames and slides are hand lapped to ensure the utmost in repeatability and precision. Barrels are made from 416R Stainless Steel. Our barrels are produced with one goal in mind, accuracy. The technology of today and the old world craftsmanship of yesteryear blended together, producing a great 1911.

### Features:

- 1911 A1 “Series 70”
- Weight - 2.7 lbs. with Empty Magazine
- Billet Steel Slide with Lowered-Flared Ejection Port
- 5” Stainless Match Grade Barrel and Bushing
- Hardened Tool Steel Hammer/Sear/Disconnector
- Lightened Aluminum Trigger
- Checkered Steel Mainspring Housing

- Choice of Target or Combat Style Fully Adjustable Rear Sights
- Ithaca Cocobolo Wood Grips
- 7 Round Stainless Magazine
- Matte Finish
- Hand Fit Frame/Slide - Barrel/Bushing

### Options:

- Hogue Extreme™ Series Grip G-10
- Tritium Night Sights
- Ambidextrous Safety



Ithaca 1911 at 15 yards.

# 100% Manufactured in the USA





# Ithaca’s Featherlight

Originally manufactured in 1937, the Model 37 Featherlight has stood the test of time, providing generations of sportsmen a reliable, versatile firearm for all types of hunting. Utilizing today’s finest American made materials and industry leading technology, the Ithaca Gun Company has brought a new leve of strength, accuracy, and precision to the classic pump shotgun. The Featherlight features a vent rib barrel with a TruGlo front sight or a field grade barrel with brass bead front sight. Each includes improved cylinder, modified and full Ithaca plus choke tubes.

### Features:

- Bottom Ejection
- 3 Choke Tubes
- Gold Plated Trigger
- Crisp 4-6lb Trigger Pull
- Chambered for 2 3/4” & 3”
- 24” 26” 28” or 30” Barrel
- Available in 12, 16 or 20 Gauge
- 5 Shot Capacity (4 + 1)
- Vent Rib or Field Barrel
- Optional Ladies’ Stock in 20 Gauge Only
- Adjustable Youth Stock in 12 or 20 Gauge
- Pachmayr Pad

### Featherlight Combo

To handle all of your hunting needs, we’ve included a 24” rifled Deerslayer barrel with your choice of fiber optic rifle sights or cantilever scope mounts.

**Available in 12 or 20 Gauge.**

### Model 37 Youth Model with Adjustable Stock



**28 Guage Model 37, Fancy A Stock**



# Ithaca’s Model 37 Waterfowl

Whether sitting in a boat or a blind, the Ithaca M37 Waterfowl is a great choice. The weather resistant matte finish offers protection from the elements. The bottom ejection makes it easy to find spent shells as well as being easier on your neighbors.

**Features:**

- Bottom Ejection
- 3 Choke Tubes
- Crisp 4-6 lb Trigger Pull
- Chambered for 2 3/4” & 3”
- 5 Shot Capacity (4+ 1)
- 28” or 30” Vent Rib Barrel
- Weather Resistant Matte Finish
- Camouflage Option



Tru-Glo front Site availabl on all models



Waterfowl shot pattern



# Ithaca’s Model 37Turkeyslayer

Combine a free floating fixed barrel, fiber optic rifle sights, an extended extra full turkey choke with the dependability of the classic M37 Featherlight and you have a winner! The Turkeyslayer holds incredibly tight patterns out to 50 yards making it a great choice to have when you call that big Tom in.

**Features:**

- Lightweight, Smooth Action
- Bottom Ejection
- Chambered for 2 3/4” & 3”
- 24” Free Floating Fixed Barrel
- Fiber Optic Rifle Sights
- Crisp 4-6 lb Trig~er Pull
- 5 Shot Capacity (4+1)
- Synthetic, Camo or Thumbhole Option
- Sling Swivel Studs
- Drilled and Tapped for Scope Mounts
- Extended Extra Full Turkey Choke
- Available in 12 or 20 Gauge



**Turkeyslayer shot pattern at 40 yards**





# Ithaca’s DeerSlayer II and III

Introduced in 1988, the DeerSlayer II was the first DeerSlayer to offer a fully rifled barrel. The DSII now comes with a free floating permanently fixed barrel for outstanding accuracy. It comes standard with Marble Arms fiber optic rifle sights and the receiver is drilled and tapped to mount your favorite scope. If you’re looking for accuracy, versatility and classic styling, here’s your gun.

## DeerSlayer II Features:

- Bottom Ejection
- 24” Fixed Rifled Barrel
- 1:24 Twist 20 Gauge
- 1:28 Twist 12 Gauge
- Gold Plated Trigger
- Sling Swivel Studs
- Crisp 4-6lb Trigger Pull
- Chambered for 2 3/4” & 3”
- Fiber Optic Rifle Sights
- Drilled and Tapped for Scope Mounts
- 5 Shot Capacity (4+1)
- Optional Thumbhole Stock
- Pachmayr Pad

Whether you’re in a tree stand or in a blind on the edge of a wide field, the DeerSlayer III was designed for extreme accuracy at long range. The fluted, heavy walled 26” rifled barrel is free floating and permanently fixed making the DSIII the ultimate slug gun capable of four inch groups at 200 yards.

## DeerSlayer III Features:

- Bottom Ejection
- Weaver Scope Base
- 26” Fluted Fixed Barrel
- 1:24 Twist 20 Gauge
- 1:28 Twist 12 Gauge
- Gold Plated Trigger
- Sling Swivel Studs
- Crisp 4-6 lb Trigger Pull
- Chambered for 2 3/4” & 3”
- 5 Shot Capacity (4+ 1)
- Optional Scope
- Optional Thumbhole Stock
- Pachmayr Pad

Deerslayer II Rear Sight



Deerslayer II Front Sight



Deerslayer III Scope Mount



DeerSlayer shot pattern at 100 yards



Deerslayer II



Deerslayer III



# Ithaca’s Home Defense Model 37

Based on Ithaca’s WWII Trench Gun, the M37 Home Defense is both durable and dependable. The M37 Home Defense begins with a precision machined steel receiver. Combine that with an interchangeable barrel, glassy smooth pump action for reliability and bottom ejection to prevent hulls from bouncing off walls and the end result is one fine defense gun.

If you want your existing Model 37 for home defense, you can purchase this 18.5 or 20 inch barrel for \$225.00.

**Features:**

- Bottom Ejection
- Chambered for 2 3/4” & 3”
- Brass Bead Front Sight
- Crisp 4-6 lb Trigger Pull
- Synthetic or Wood Stock
- Available in 12 or 20 Gauge
- 5 Shot Capacity ( 4+ 1)
- 8 Shot Capacity (7+ 1) 12 Gauge Only
- Weather Resistant Finish



**Model 37 HD**



**Model 37 HD**



# Ithaca’s Tactical Model 37

Based on Ithaca’s WWII Trench Gun, the M37 Home Defense is both durable and dependable. The M37 Home Defense begins with a precision machined steel receiver. Combine that with an interchangeable barrel, glassy smooth pump action for reliability, and bottom ejection to prevent hulls from bouncing off walls and the end result is one fine defense gun.

**Features:**

- Bottom Ejection
- Chambered for 2 3/4” & 3”
- Crisp 4-6 lb Trigger Pull
- Synthetic adjustable stock with recoil absorber built in
- Available in 12 or 20 Gauge
- 5 Shot Capacity ( 4+ 1)
- 8 Shot Capacity (7+ 1)
- Weather Resistant Finish
- Drilled and tapped for weaver base



**Model 37 Tactical Pistol Grip, Adjustable  
(Special order only)**

**Model 37 Tactical  
Side Folder**

**Model 37 AOW  
Class III Required**

**Model 37 HD  
Pistol Grip**

**Model 37 HD  
Mark 5 Stock**



Gun Specifications

TYPE	SKU	DESCRIPTION	WEIGHT	LOP	DAC/DARC	DAH	OVERALL LENGTHS
Pistol	1911-BM	45 ACP, BoMar Style Sight, Case & 1 Clip	2.6	n/a	n/a	n/a	8.75"
Pistol	1911-N	45 ACP, Novak Style Sight, Case & 1 Clip	2.6	n/a	n/a	n/a	8.75"
Pistol	1911-T45G10A	45 ACP, BoMar Style Sight, G10 Grips, Ambi, Case & 1 Clip	2.6	n/a	n/a	n/a	8.75"
Pistol	1911-C45G10A	45 ACP, Novak Style Sight, G10 Grips, Ambi, Case & 1 Clip	2.6	n/a	n/a	n/a	8.75"
Trap	TR1230-7030	12ga 30" Barrel 70/30 Rib,"A" Wood, 3 Chokes	7.6	14 1/4"	1 1/2"	2 1/4"	49.6"
Trap	TR1230-6040	12ga 30" Barrel 60/40 Rib,"A" Wood, 3 Chokes	7.6	14 1/4"	1 1/2"	2 1/4"	49.6"
Defense	HD1218W	12ga 18 1/2" Barrel, Wood Stock, 5 shot	7	14 1/4"	1 3/4"	2 1/2"	38"
Defense	HD1218S	12ga 18 1/2" Barrel, Synthetic Stock, 5 shot	7.1	14"	1 3/8"	2"	37.75"
Defense	HD1220W	12ga 20" Barrel, Wood Stock, 8 shot	7	14 1/4"	1 3/4"	2 1/2'	39.5"
Defense	HD1220S	12ga 20" Barrel, Synthetic Stock, 8 shot	7	14"	1 3/8"	2"	39.5"
Defense	HD1218SP	12ga 18 1/2" Barrel, Synthetic Pistol Grip, 5 shot					
Defense	HD2018W	20ga 18 1/2" Barrel, Wood Stock, 5 shot	6.5	14 1/4"	1 3/4"	2 1/2"	38"
Defense	HD2018s	20ga 18 1/2" Barrel, Synthetic Stock, 5 shot	6.6	14"	1 3/8"	2"	38"
Tactical	TD1218SFS	12ga 18 1/2" Barrel, Synthetic Side Folding Stock, 5 shot	7.7	13 1/2	n/a	n/a	37.5"
Tactical	TD1220SFS	12ga 20" Barrel, Synthetic Side Folding Stock, 8 shot	7.8	13 1/2"	n/a	n/a	39"
Tactical	TD1218SM5	12ga 18 1/2" Barrel, Synthetic Mark 5 Stock, 5 shot	6.8"	13 3/4"	n/a	n/a	37.75"
Tactical	TD1220SM5	12ga 20" Barrel, Synthetic Mark 5 Stock, 8 shot	6.9	13 3/4"	n/a	n/a	39.25

Gun Specifications

TYPE	SKU	DESCRIPTION	WEIGHT	LOP	DAC/DARC	DAH	OVERALL LENGTHS
Tactical	TD1214AOW	12ga 14" Barrel, Synthetic Pistol Grip, 5 shot	5.8	n/a	n/a	n/a	23.5"
Tactical	TD1218PARS	12ga 18 1/2" Barrel, Pistol Grip Recoil Reducing Adj Stock, 5 shot	8.5	12 1/4-15 1/2	n/a	n/a	31.5"
Tactical	TD1220PARS	12ga 20" Barrel, Pistol Grip Recoil Reducing Adj Stock, 8 shot	8.6	12 1/4-15 1/2	n/a	n/a	39.75
Tactical	TD1218SB	12ga 18 1/2" Barrel, Synthetic Stock, Breacher, 5 shot					
TurkeySlayer	TKY1224C	12ga 24" Barrel, Camo, Synthetic Stock, Rifle Sights, 5 shot	7.6	14"	1 3/8"	2"	44.25
TurkeySlayer	TKY1224S	12ga 24" Barrel, Matte Blued, Synthetic Stock, Rifle Sights, 5 shot	7.6	14"	1 3/8"	2"	44.25
TurkeySlayer	TKY1224LTHL	12ga 24" Barrel, Matte Blued, Left Hand Thumbhole Stock, 5 shot	8.2	14 1/4"	3/4"	1 1/8"	44.25
TurkeySlayer	TKY1224LTHR	12ga 24" Barrel, Matte Blued, Right Hand Thumbhole Stock, 5 shot	8.2	14 1/4"	3/4"	1 1/8"	44.25
TurkeySlayer	TKY2024C	20ga 24" Barrel, Camo, Synthetic Stock, Rifle Sights, 5 shot	7.2	14"	1 3/8"	2"	44.25
TurkeySlayer	TKY2024S	20ga 24" Barrel, Matte Blued, Synthetic Stock, Rifle Sights, 5 shot	7.2	14"	1 3/8"	2"	44.25
TurkeySlayer	TKY2024LTHL	20ga 24" Barrel, Matte Blued, Left Hand Thumbhole Stock, 5 shot	7.8	14 1/4"	3/4"	1 1/8"	44.25
TurkeySlayer	TKY2024LTHR	20ga 24" Barrel, Matte Blued, Right Hand Thumbhole Stock, 5 shot	7.8	14 1/4"	3/4"	1 1/8"	44.25
Waterfowl	WF1228VR	12ga 28" Barrel, Matte Blued, Synthetic Stock, 5 shot	7.4	14"	1 3/8"	2"	47.6"
Waterfowl	WF1228C	12ga 28" Barrel, Camo, Synthetic Stock, 5 shot	7.4	14"	1 3/8"	2"	47.6"
Waterfowl	WF2030VR	20ga 30" Barrel, Matte Blued, Synthetic Stock, 5 shot	7.2	14"	1 3/8"	2"	49.6"
Waterfowl	WF2030C	20ga 30" Barrel, Camo, Synthetic Stock, 5 shot	7.2	14"	1 3/8"	2"	49.6"
Waterfowl	WF2028VR	20ga 28" Barrel, Matte Blued, Synthetic Stock, 5 shot	7.2	14"	1 3/8"	2"	47.6"
Waterfowl	WF2028C	20ga 28" Barrel, Camo, Synthetic Stock, 5 shot	7.2	14"	1 3/8"	2"	47.6"



Gun Specifications

TYPE	SKU	DESCRIPTION	WEIGHT	LOP	DAC/DARC	DAH	OVERALL LENGTHS
DeerSlayer II	DS21224	12ga 24" Barrel, Blued, Wood Stock, Rifled Sights, 5 shot	7.6	14 1/4"	1 1/4"-1 1/2"	2 1/8"	43.625"
DeerSlayer II	DS21224THR	12ga 24" Barrel, Blued, Right Hand Thumbhole Stock, Rifled Sights, 5 shot	7.6	14 1/4"	1 1/4"-1 1/2"	2 1/8"	43.625"
DeerSlayer II	DS21224THL	12ga 24" Barrel, Blued, Left Hand Thumbhole Stock, Rifled Sights, 5 shot	7.6	14 1/4"	1 1/4"-1 1/2"	2 1/8"	43.625"
DeerSlayer II	DS22024	20ga 24" Barrel, Blued, Wood Stock, Rifled Sights, 5 shot	6.8	14 1/4"	1 1/4"-1 1/2"	2 1/8"	43.625"
DeerSlayer II	DS22024THR	20ga 24" Barrel, Blued, Right Hand Thumbhole Stock, Rifled Sights, 5 shot	7.6	14 1/4"	1 1/4"-1 1/2"	2 1/8"	43.625"
DeerSlayer II	DS22024THL	20ga 24" Barrel, Blued, Left Hand Thumbhole Stock, Rifled Sights, 5 shot	7.6	14 1/4"	1 1/4"-1 1/2"	2 1/8"	43.625"
DeerSlayer III	DS31226	12ga 26" Barrel, Blued, Wood Stock, Weaver Base, 5 shot	7.6	14 1/4"	1 1/4"-1 1/2"	2 1/8"	45.625"
DeerSlayer III	DS31226THR	12ga 26" Barrel, Blued, Right Hand Thumbhole Stock, Rifled Sights, 5 shot	9.5	14 1/4"	1 1/4"-1 1/2"	2 1/8"	45.625"
DeerSlayer III	DS31226THL	12ga 26" Barrel, Blued, Left Hand Thumbhole Stock, Rifled Sights, 5 shot	9.5	14 1/4"	1 1/4"-1 1/2"	2 1/8"	45.625"
DeerSlayer III	DS32026	20ga 26" Barrel, Blued, Wood Stock, Rifled Sights, 5 shot	8.1	14 1/4"	1 1/4"-1 1/2"	2 1/8"	45.625"
DeerSlayer III	DS32026THR	20ga 26" Barrel, Blued, Right Hand Thumbhole Stock, Rifled Sights, 5 shot	8.1	14 1/4"	1 1/4"-1 1/2"	2 1/8"	45.625"
DeerSlayer III	DS32026THL	20ga 26" Barrel, Blued, Left Hand Thumbhole Stock, Rifled Sights, 5 shot	8.1	14 1/4"	1 1/4"-1 1/2"	2 1/8"	45.625"
HogSlayer	HS1220RS	12ga 20" Rifled Barrel, Matte Blued, Synthetic Stock, Rifled Sights, 5 shot	7	14"	1 3/8"	2"	39.5"
HogSlayer	HS1220RSC	12ga 20" Rifled Barrel, Camo, Synthetic Stock, Rifled Sights, 5 shot	7	14"	1 3/8"	2"	39.5"
Featherlight 28GA	FL2824VRMA	28ga 24" Barrel, Wood Stock, 5 shot, 3 chokes	6	14"	1 1/2"	2 1/4"	43"
Featherlight 28GA	FL2826VRMA	28ga 26" Barrel, Wood Stock, 5 shot, 3 chokes	6	14"	1 1/2"	2 1/4"	45"
Featherlight 28GA	FL2828VRMA	28ga 28" Barrel, Wood Stock, 5 shot, 3 chokes	6	14"	1 1/2"	2 1/4"	47"

Gun Specifications

TYPE	SKU	DESCRIPTION	WEIGHT	LOP	DAC/DARC	DAH	OVERALL LENGTHS
Featherlight 28GA	FL2824VRMAE	28ga 24" Barrel, English Stock, 5 shot, 3 chokes	6.1	14"	1 1/2"	2 1/4"	43"
Featherlight 28GA	FL2826VRMAE	28ga 26" Barrel, English Stock, 5 shot, 3 chokes	6.1	14"	1 1/2"	2 1/4"	45"
Featherlight 28GA	FL2828VRMAE	28ga 28" Barrel, English Stock, 5 shot, 3 chokes	6.1	14"	1 1/2"	2 1/4"	47"
Featherlight 20GA	FL2024VR	20ga 24" Barrel,Vent Rib, Wood Stock, 5 shot, 3 chokes	6.7	14 1/4"	1 1/2"	2 1/4"	43.6"
Featherlight 20GA	FL2026VR	20ga 26" Barrel,Vent Rib, Wood Stock, 5 shot, 3 chokes	6.8	14 1/4"	1 1/2"	2 1/4"	45.6"
Featherlight 20GA	FL2028VR	20ga 28" Barrel,Vent Rib, Wood Stock, 5 shot, 3 chokes	6.8	14 1/4"	1 1/2"	2 1/4"	47.6"
Featherlight 20GA	FL2030VR	20ga 30" Barrel,Vent Rib, Wood Stock, 5 shot, 3 chokes	6.8	14 1/4"	1 1/2"	2 1/4"	49.6
Featherlight 20GA	FL2024F	20ga 24" Barrel Field, Wood Stock, 5 shot, 3 chokes	6.8	14 1/4"	1 1/2"	2 1/4"	43.6"
Featherlight 20GA	FL2026F	20ga 26" Barrel Field, Wood Stock, 5 shot, 3 chokes	6.8	14 1/4"	1 1/2"	2 1/4"	45.6"
Featherlight 20GA	FL2028F	20ga 28" Barrel Field, Wood Stock, 5 shot, 3 chokes	6.8	14 1/4"	1 1/2"	2 1/4"	47.6"
Featherlight 16GA	FL1626VR	16ga 26" Barrel,Vent Rib, Wood Stock, 5 shot, 3 chokes	7.4	14 1/4"	1 1/2"	2 1/4"	45.6"
Featherlight 16GA	FL1628VR	16ga 28" Barrel,Vent Rib, Wood Stock, 5 shot, 3 chokes	7.4	14 1/4"	1 1/2"	2 1/4"	47.6"
Featherlight 16GA	FL1626F	16ga 26" Barrel Field, Wood Stock, 5 shot, 3 chokes	7.4	14 1/4"	1 1/2"	2 1/4"	45.6"
Featherlight 16GA	FL1628F	16ga 28" Barrel Field, Wood Stock, 5 shot, 3 chokes	7.4	14 1/4"	1 1/2"	2 1/4"	47.6"
Featherlight 12GA	FL1224VR	12ga 24" Barrel,Vent Rib, Wood Stock, 5 shot, 3 chokes	7.6	14 1/4"	1 1/2"	2 1/4"	43.6"
Featherlight 12GA	FL1226VR	12ga 26" Barrel,Vent Rib, Wood Stock, 5 shot, 3 chokes	7.6	14 1/4"	1 1/2"	2 1/4"	45.6"
Featherlight 12GA	FL1228VR	12ga 28" Barrel,Vent Rib, Wood Stock, 5 shot, 3 chokes	7.6	14 1/4"	1 1/2"	2 1/4"	47.6"
Featherlight 12GA	FL1230VR	12ga 30" Barrel,Vent Rib, Wood Stock, 5 shot, 3 chokes	7.6	14 1/4"	1 1/2"	2 1/4"	49.6
Featherlight 12GA	FL1224F	12ga 24" Barrel Field, Wood Stock, 5 shot, 3 chokes	7.6	14 1/4"	1 1/2"	2 1/4"	43.6"
Featherlight 12GA	FL1226F	12ga 26" Barrel Field, Wood Stock, 5 shot, 3 chokes	7.6	14 1/4"	1 1/2"	2 1/4"	45.6"
Featherlight 12GA	FL1228F	12ga 28" Barrel Field, Wood Stock, 5 shot, 3 chokes	7.6	14 1/4"	1 1/2"	2 1/4"	47.6"



Gun Specifications

TYPE	SKU	DESCRIPTION	WEIGHT	LOP	DAC/DARC	DAH	OVERALL LENGTHS
Featherlight Womens	FL2024VRW	20ga 24" Barrel, Vent Rib, Wood Stock, 5 shot, 3 chokes	6.8	14 1/4"	1 1/2"	2 1/4"	43.6
Featherlight Womens	FL2026VRW	20ga 26" Barrel, Vent Rib, Wood Stock, 5 shot, 3 chokes	6.8	14 1/4"	1 1/2"	2 1/4"	45.6
Featherlight Womens	FL2028VRW	20ga 28" Barrel, Vent Rib, Wood Stock, 5 shot, 3 chokes	6.8	14 1/4"	1 1/2"	2 1/4"	47.6
Featherlight Womens	FL2024FW	20ga 24" Barrel Field, Wood Stock, 5 shot, 3 chokes	6.8	14 1/4"	1 1/2"	2 1/4"	43.6
Featherlight Womens	FL2024FW	20ga 24" BarrelField, Wood Stock, 5 shot, 3 chokes	6.8	14 1/4"	1 1/2"	2 1/4"	45.6
Featherlight Womens	FL2024FW	20ga 24" Barrel Field, Wood Stock, 5 shot, 3 chokes	6.8	14 1/4"	1 1/2"	2 1/4"	47.6
Featherlight Youth	FL1224VRY	12ga 24" Barrel, Vent Rib, ATI Adjustable Stock, 5 shot, 3 chokes	7.2	12 1/2"-14 1/2"	1 1/2"	2 1/4"	44.25"-46.75"
Featherlight Youth	FL1226VRY	12ga 26" Barrel, Vent Rib, ATI Adjustable Stock, 5 shot, 3 chokes	7.2	12 1/2"-14 1/2"	1 1/2"	2 1/4"	46.25"-48.25"
Featherlight Youth	FL1228VRY	12ga 28" Barrel, Vent Rib, ATI Adjustable Stock, 5 shot, 3 chokes	7.2	12 1/2"-14 1/2"	1 1/2"	2 1/4"	48.25"-50.25"
Featherlight Youth	FL1224FY	12ga 24" Barrel Field, ATI Adjustable Stock, 5 shot, 3 chokes	7.2	12 1/2"-14 1/2"	1 1/2"	2 1/4"	44.25"-46.75"
Featherlight Youth	FL1226FY	12ga 26" Barrel Field, ATI Adjustable Stock, 5 shot, 3 chokes	7.2	12 1/2"-14 1/2"	1 1/2"	2 1/4"	46.25"-48.25"
Featherlight Youth	FL1228FY	12ga 28" Barrel Field, ATI Adjustable Stock, 5 shot, 3 chokes	7.2	12 1/2"-14 1/2"	1 1/2"	2 1/4"	48.25"-50.25"
Featherlight Youth	FL2024VRY	20ga 24" Barrel, Vent Rib, ATI Adjustable Stock, 5 shot, 3 chokes	6.8	12 1/2"-14 1/2"	1 1/2"	2 1/4"	44.25"-46.75"
Featherlight Youth	FL2026VRY	20ga 26" Barrel, Vent Rib, ATI Adjustable Stock, 5 shot, 3 chokes	6.8	12 1/2"-14 1/2"	1 1/2"	2 1/4"	46.25"-48.25"
Featherlight Youth	FL2028VRY	20ga 28" Barrel, Vent Rib, ATI Adjustable Stock, 5 shot, 3 chokes	6.8	12 1/2"-14 1/2"	1 1/2"	2 1/4"	48.25"-50.25"
Featherlight Youth	FL2024FY	20ga 24" Barrel Field, ATI Adjustable Stock, 5 shot, 3 chokes	6.8	12 1/2"-14 1/2"	1 1/2"	2 1/4"	44.25"-46.75"
Featherlight Youth	FL2026FY	20ga 26" Barrel Field, ATI Adjustable Stock, 5 shot, 3 chokes	6.8	12 1/2"-14 1/2"	1 1/2"	2 1/4"	46.25"-48.25"
Featherlight Youth	FL2028FY	20ga 28" Barrel Field, ATI Adjustable Stock, 5 shot, 3 chokes	6.8	12 1/2"-14 1/2"	1 1/2"	2 1/4"	48.25"-50.25"

Gun Specifications

TYPE	SKU	DESCRIPTION	WEIGHT	LOP	DAC/DARC	DAH	OVERALL LENGTHS
Featherlight Combo	FL1224VRCB	12ga 24" Barrel, Vent Rib & 24" Rifled, 5 shot, 3 chokes					
Featherlight Combo	FL1226VRCB	12ga 26" Barrel, Vent Rib & 24" Rifled, 5 shot, 3 chokes					
Featherlight Combo	FL1228VRCB	12ga 28" Barrel, Vent Rib & 24" Rifled, 5 shot, 3 chokes					
Featherlight Combo	FL1224VRCLCB	12ga 24" Barrel, Vent Rib & 24" Rifled Cantilever, 5 shot, 3 chokes					
Featherlight Combo	FL1226VRCLCB	12ga 26" Barrel, Vent Rib & 24" Rifled Cantilever, 5 shot, 3 chokes					
Featherlight Combo	FL1228VRCLCB	12ga 28" Barrel, Vent Rib & 24" Rifled Cantilever, 5 shot, 3 chokes					
Featherlight Combo	FL2024VRCB	20ga 24" Barrel, Vent Rib & 24" Rifled, 5 shot, 3 chokes					
Featherlight Combo	FL2026VRCB	20ga 26" Barrel, Vent Rib & 24" Rifled, 5 shot, 3 chokes					
Featherlight Combo	FL2028VRCB	20ga 28" Barrel, Vent Rib & 24" Rifled, 5 shot, 3 chokes					
Featherlight Combo	FL2024VRCLCB	20ga 24" Barrel, Vent Rib & 24" Rifled Cantilever, 5 shot, 3 chokes					
Featherlight Combo	FL2026VRCLCB	20ga 26" Barrel, Vent Rib & 24" Rifled Cantilever, 5 shot, 3 chokes					
Featherlight Combo	FL2028VRCLCB	20ga 28" Barrel, Vent Rib & 24" Rifled Cantilever, 5 shot, 3 chokes					



Gun Specifications

TYPE	SKU	DESCRIPTION		LOP	DAC/DARC	DAH	OVERALL LENGTHS
Barrels	DS20-24C	20ga 24" Rifled, 1:24 Twist, Cantilever					
Barrels	DS12-24C	12ga 24" Rifled, 1:28 Twist, Cantilever					
Barrels	DS1-20	20ga 24" Rifled, 1:24 Twist					
Barrels	DS1-12	12ga 24" Rifled, 1:28 Twist					
Barrels	FL1224VR	12ga 24" Vent Rib					
Barrels	FL1226VR	12ga 26" Vent Rib					
Barrels	FL1228VR	12ga 28" Vent Rib					
Barrels	FL1224F	12ga 24" Field					
Barrels	FL1226F	12ga 26" Field					
Barrels	FL1228F	12ga 28" Field					
Barrels	FL1626VR	16ga 26" Vent Rib					
Barrels	FL1628VR	16ga 28" Vent Rib					
Barrels	FL1626F	16ga 26" Field					
Barrels	FL1628F	16ga 28" Field					
Barrels	FL2024VR	20ga 24" Vent Rib					
Barrels	FL2026VR	20ga 26" Vent Rib					
Barrels	FL2028VR	20ga 28" Vent Rib					
Barrels	FL2024F	20ga 24" Field					
Barrels	FL2026F	202ga 26" Field					

Service at Ithaca

Ithaca’s service department uses all OEM parts for M37. We advise that all parts purchased from our inventory be installed by a qualified gunsmith, preferable one well-versed in Ithaca firearms. Please consider the advantages of sending your gun to us for Ithaca factory repairs. If you are in need of parts and or service for your Ithaca, the best step is to call us and talk to the parts and service manager.

Ithaca barrels are machined for precision, accuracy and strength. Our barrels are simply the truest, strongest barrel you will ever shoot, because the integrity has not been compromised. Any barrel purchased requires a headspace check, regardless of when or where your firearm was made. We strongly suggest you send your gun to have the barrel checked and tested. There is no additional charge for this service.

Call us at 1-877-6ITHACA (1-877-648-4222) to talk to our service department about having your gun repaired, or contact service@ithacagun.com Please allow 4-6 weeks for completion and return of all gun repair orders. Be sure to talk to our service and parts manager before sending your firearm. Guns that have been sent without proper approval will be returned to the owner at the owners expense.

It is a violation of federal law to send a gun in the mail or via a parcel service with ammunition anywhere in the package.