



**Frontier Scout Buntline '62
and
Frontier Scout '62
REVOLVERS**

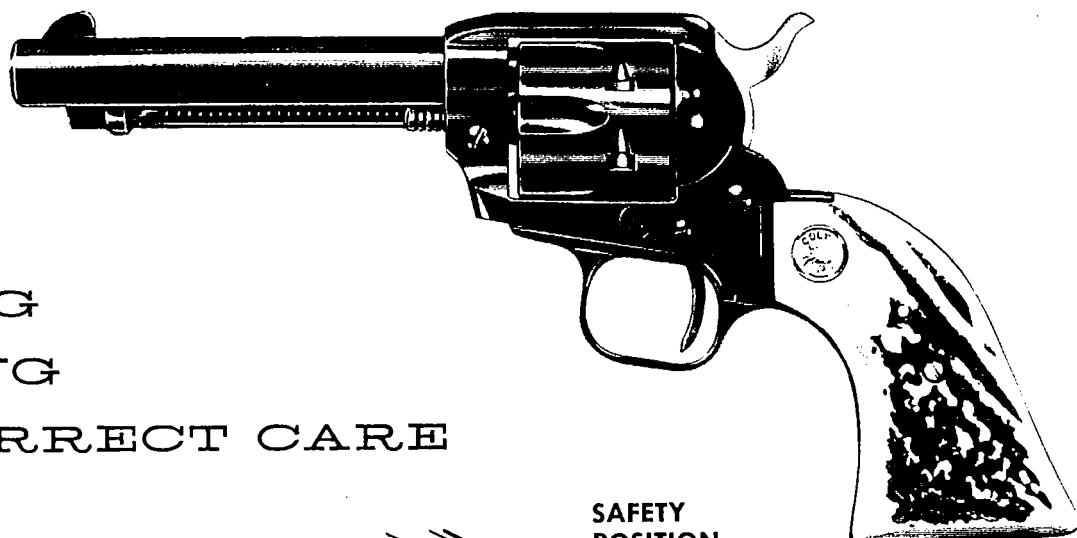
Loading • Firing • Correct Care



FRONTIER SCOUT BUNTLINE '62

and

FRONTIER SCOUT '62 Single Action Revolvers

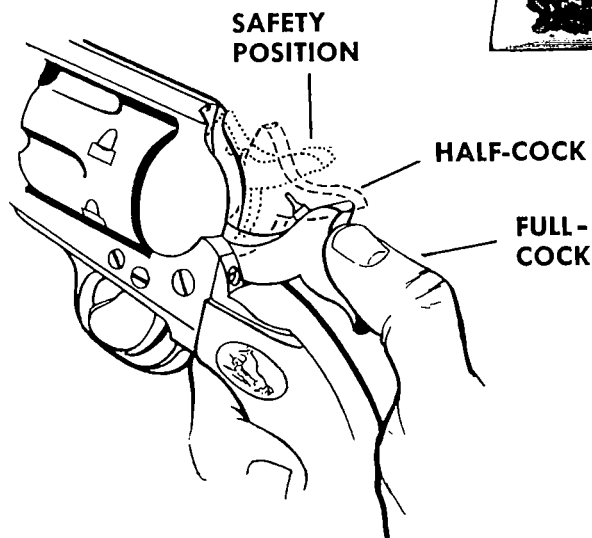


LOADING FIRING CORRECT CARE

GENERAL. Your Colt Single Action Frontier Scout is one of the most simple, rugged and dependable handguns ever manufactured. Used correctly it will serve you indefinitely without ever requiring major repairs. Before handling or shooting your Single Action, **BE SURE** to read this sheet and carefully note the precautions listed. These precautions, though important, are simple, and correct handling will quickly become automatic with you. The precautions apply to **EVERY** single action revolver and are dictated by the inherent mechanical structure of **ALL** handguns of this type.

ACTION. "Single Action" means that the hammer of this revolver must be drawn back—or "cocked"—with the thumb, before each shot is fired. When cocking the Single Action, you will notice that there are *three* distinct hammer positions as follows:

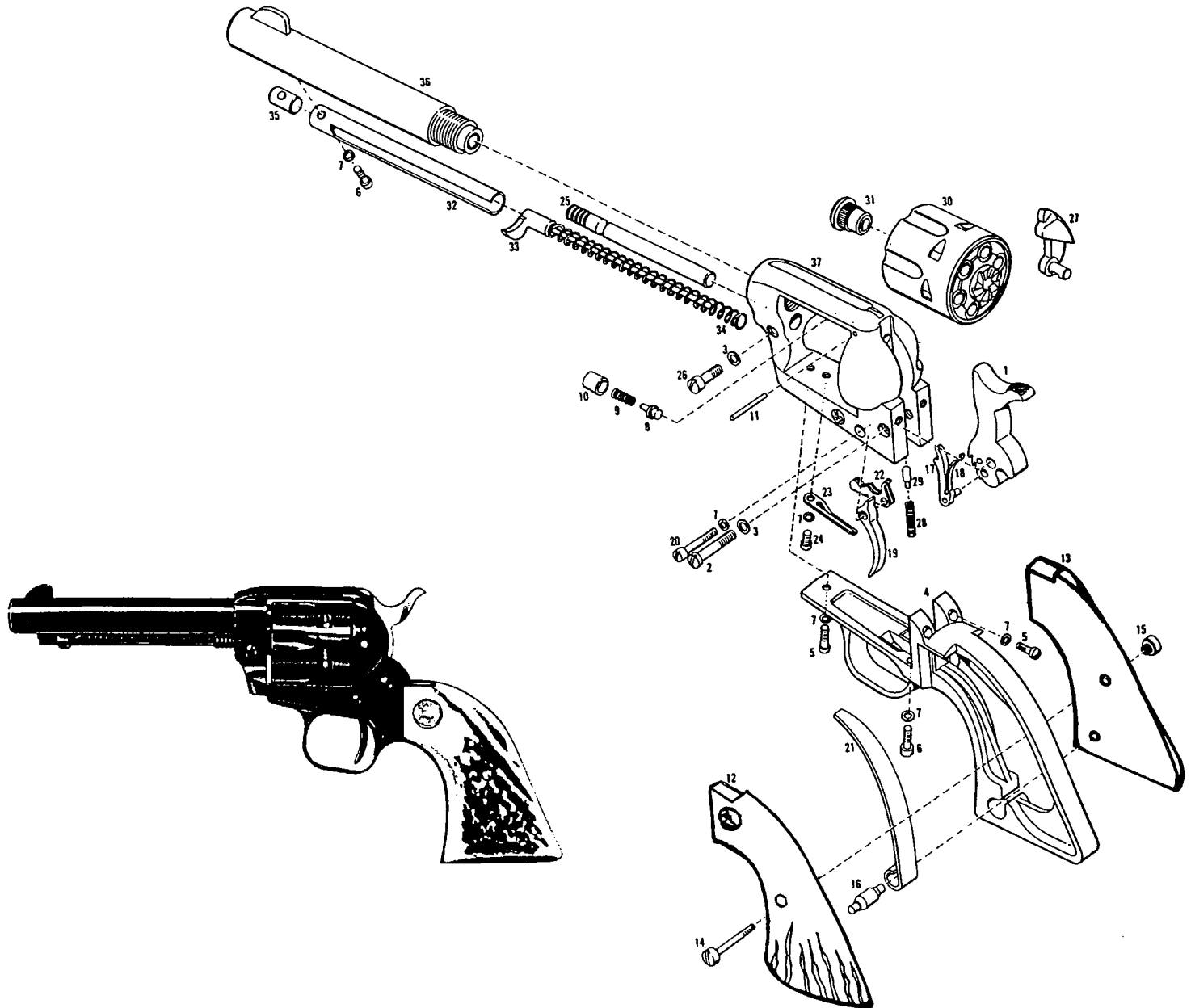
1. **SAFETY POSITION**—with the hammer held safely away from the firing pin.
2. **HALF-COCK**—with the hammer approximately half way back and the cylinder bolt depressed, leaving the cylinder free to rotate.



3. **FULL-COCK**—with the hammer all the way back and the revolver ready to fire.

IMPORTANT—The Safety and Half-Cock notches are designed to *prevent* the trigger from being pulled, so **Do NOT** try to force the trigger with the hammer in either of these two positions. If it is desired to lower the hammer, pull the hammer back slightly; then pull the trigger and lower the hammer *carefully*.

COMPONENT PARTS OF THE COLT SINGLE ACTION FRONTIER SCOUT REVOLVER



LOADING. Draw the hammer back to the Half-Cock position. Do not touch the trigger but leave it free to snap into the notch. (NOTE: If the hammer should be at the Full-Cock position, lower it *all the way first* and *then* draw back to Half-Cock. Otherwise, the bolt cam lever cannot operate to release the cylinder.) This will leave the cylinder free to rotate for loading. Open the Loading Gate on the right-hand side of the revolver and load each chamber. Close the loading gate.

UNLOADING. After firing, draw the hammer back to Half-Cock position, open the gate and operate the ejector lever (located under the barrel) to eject the empty cartridge cases.

SAFE POSITION—CARRYING. The safest way to carry your Colt Single Action Frontier Scout is with five

cartridges in the chamber and the hammer on the empty sixth chamber.

IMPORTANT—When placing the hammer in the Safety position, first lower it all the way *gently* (since dropping the hammer hard can fire the cartridge) and then draw it back to the Safety position. If the hammer is incorrectly lowered, direct from the Half- or Full-Cock positions to the Safety position, the sear may not engage the hammer notch completely and safely.

REMOVING THE CYLINDER. To remove the cylinder for cleaning or to inspect the bore:

1. BE SURE the hammer is in the Half-Cock position with the cylinder free to rotate (see Note under paragraph on Loading). Make sure the Loading Gate is open.

WHEN ORDERING PARTS, SPECIFY: Model, Caliber, Serial Number, and Name of Part.

CALIBER: .22 Short, Long, Long Rifle

.22 Winchester Magnum Rimfire

Drawing Number	Description	Part Number	Price		
1	Hammer Assembly.....	53578	5.00	21	Main Spring..... 51718 .75
2	Hammer Screw.....	51747B	.33	22	Bolt..... 51770 1.00
3	Nylon Washer—Large.....	51752	.33	23	Bolt and Trigger Spring..... 51750 .33
4	Back Strap Assy. (all blue)....	51781E	7.50	24	Bolt Spring Screw..... 51746 .33
5	Back Strap Screw—Top.....	51743B	.33	25	Base Pin..... 51741B .33
6	Back Strap Screw—Bottom....	51742B	.33	26	Base Pin Screw..... 51744B .33
7	Nylon Washer—Small.....	51751	.33	27	Gate Det. Assembly..... 51786E 2.00
8	Firing Pin.....	51774	.33	28	Gate Spring..... 51723 .33
9	Firing Pin Spring.....	51717	.33	29	Gate Detent..... 51737 .33
10	Recoil Cup.....	51715	.33	30	Cylinder Assembly .22 L.R.... 51754B 13.33
11	Recoil Cup pin, Blue finish....	95003B	.33	30	Cylinder .22 Magnum..... 51775B 13.33
12	*Stocks Assy., L.H. Staglite.....	94007	5.00 pr.	31	Cylinder Bushing..... 51710B .33
13	*Stocks Assy., R.H. Staglite.....	94007		32	Ejector Rod Tube..... 51735B .50
14	Stock Screw.....	00000	.00	33	Ejector Rod Assembly..... 51789E 1.50
12	*Stock—Left Hand Plastic.....	51714	3.00 pr.	34	Ejector Spring..... 51722 .33
13	*Stock—Right Hand Plastic.....	51712		35	Ejector Tube Plug..... 51736B .33
14	Stock Screw.....	50088	.33	36	Barrel Assembly 4¾ .22 L.R.... 53540 13.33
15	Stock Screw Nut.....	50089	.33	36	Barrel 4¾" .22 Magnum..... 53541 13.33
16	Stock Pin.....	51719	.33	36	Barrel 9½" .22Magnum(Buntline) 53543 17.50
17	Hand and Post Assembly.....	51748	1.00	36	Barrel 9½" .22 L.R. (Buntline).. 53542 17.50
18	Hand Spring.....	51727	.33	37	Frame Assembly..... 51783E Not for Sale
19	Trigger.....	51728B	1.75		
20	Bolt and Trigger Screw.....	51745B	.33		

*Sold only in pairs

2. Unscrew the base pin catch.
3. Remove the base pin. The cylinder can now be removed from the Loading Gate side of the revolver without danger of scratching or other damage.

CLEANING THE SINGLE ACTION FRONTIER SCOUT.

Using modern, factory-loaded cartridges with smokeless powder and non-corrosive primers, all you need to keep your Colt Revolver in perfect condition is a brass wire-bristle brush; a brass, aluminum or hardwood cleaning rod (do *not* use steel since this can damage the rifling at the muzzle) with "jag" type tip; cotton flannel patches cut to fit the bore snugly; a good cleaning solution (there are several preparations on the market); and a light, non-gumming oil. Remove the cylinder (see directions above). Dip the brass wire brush in the cleaning solution and scrub out the barrel bore and cylinder chambers well. (Never try to reverse direction while running the wire brush through the bore; pass it all the way through and then pull it back.) Wipe out barrel and cylinder with flannel patches until the last patch comes out clean. Finally, give the bore, chambers, and all parts a good (but not excessive) coat of oil. Making sure that the hammer is in the Half-Cock position and the Loading Gate is open, replace the cylinder in the revolver.

W A R N I N G

DO NOT "FAN"

YOUR COLT REVOLVER

TO PERMIT "FANNING," THE INTERNAL MECHANISM OF ANY SINGLE ACTION REVOLVER MUST BE SPECIALLY ALTERED. THIS ALTERATION WILL DEFINITELY RENDER YOUR REVOLVER BOTH UNSAFE AND UNSATISFACTORY FOR GENERAL, ALL-AROUND SHOOTING AND IS NOT RECOMMENDED.

YOUR COLT WARRANTY

All Colt's Revolvers and Automatic Pistols are built to exacting standards of engineering and manufacturing and are rigidly inspected before leaving our factory. They are warranted to be free from defects in material and workmanship under normal use and service for a period of 12 months from the date of purchase. Colt's obligation is limited to repairing or replacing, F.O.B. Hartford, Conn., U.S.A., any part of a Colt's Revolver or Automatic Pistol which Colt's examination discloses to be thus defective.

This warranty is in lieu of all other warranties, expressed or implied. This warranty shall not apply to defects resulting from accidents, alterations or misuse. If—in the opinion of Colt's gunsmiths employed at Hartford, Connecticut—modifications, changes or additions made outside our factory have affected the operation of the weapon to render it faulty, this warranty shall be void. This warranty shall also be void if any part not of Colt's manufacture has been incorporated, or if other than factory loaded ammunition is fired in it.



**COLT'S PATENT FIRE ARMS
MANUFACTURING COMPANY, INC.**

150 Huyshope Avenue,
Hartford 15, Connecticut, U.S.A.